

SHOWER

ZT5092

Colonna doccia con termostatico esterno. / Shower column with exposed thermostatic mixer.



Colonna doccia con termostatico esterno, corpo termostatico freddo, soffione in acciaio cromato 300x300 mm e spessore ultra slim 3 mm, doccetta in ottone Z94178

Shower column with exposed thermostatic mixer, thermo-insulated body, 300x300 mm stainless steel 3 mm extra slim shower head and Z94178 brass handshower.

Finiture / Finishes

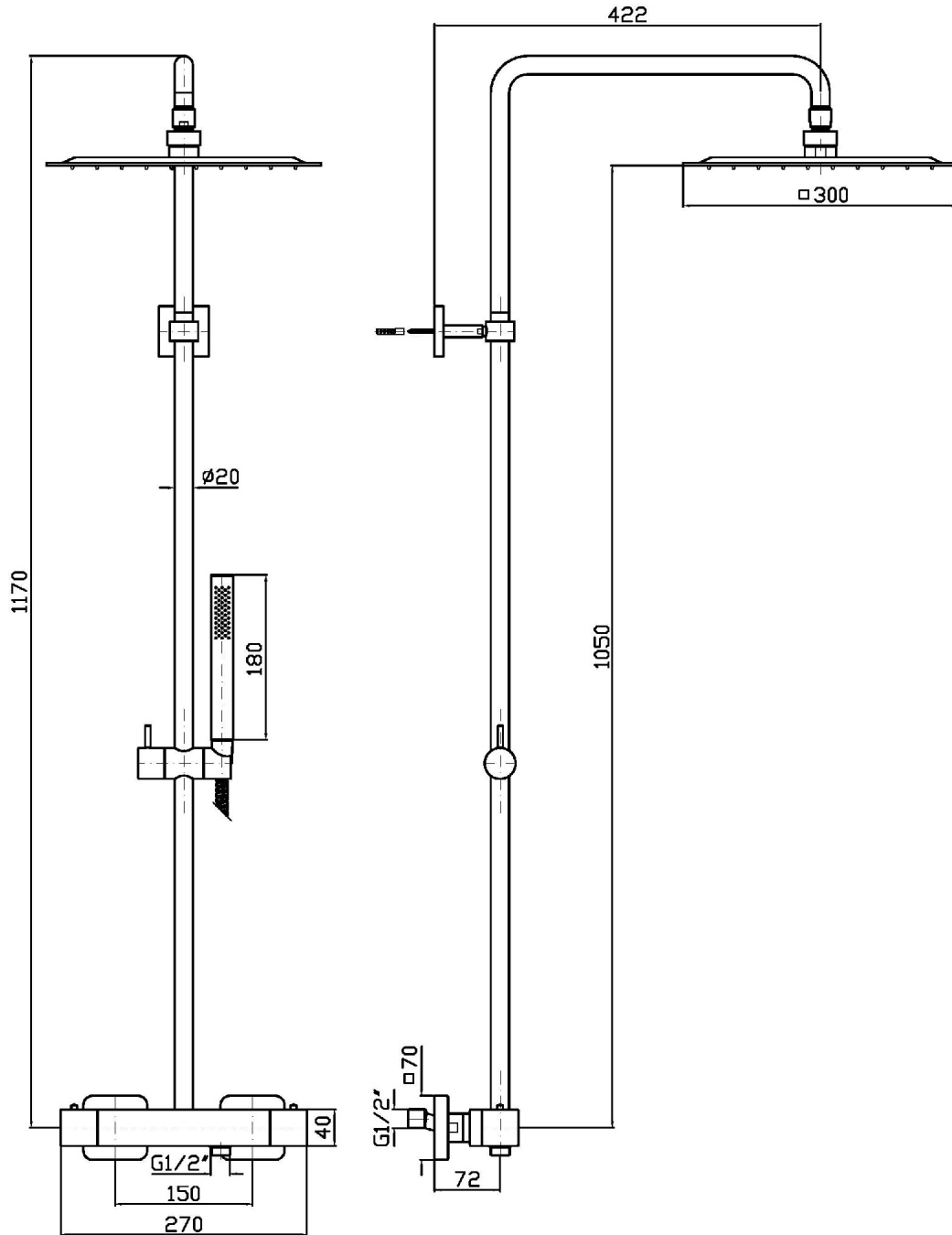


Cromo / Chrome

SHOWER

ZT5092

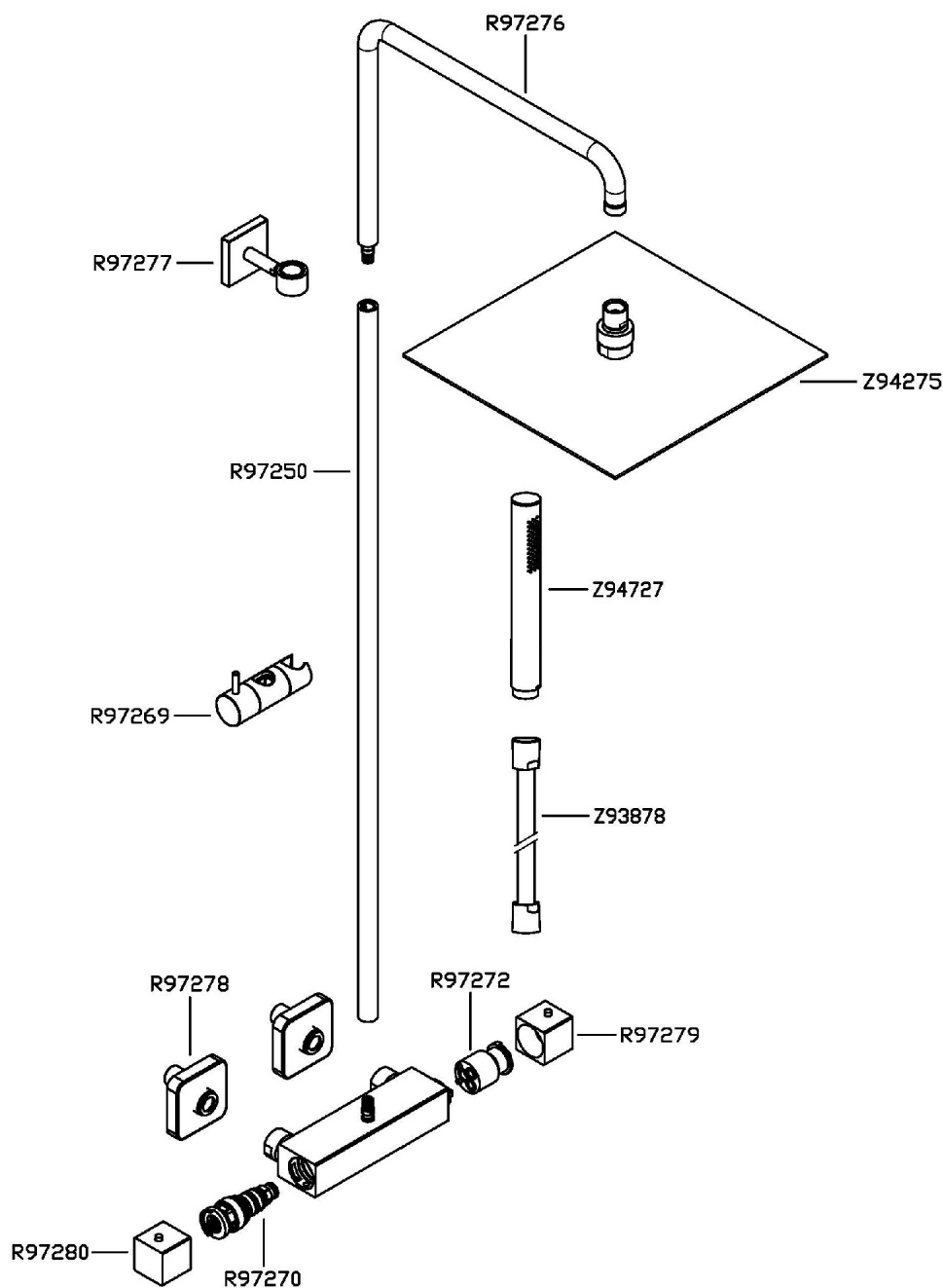
Disegno Complessivo / Overall Drawing



SHOWER

ZT5092

Esplosi / Exploded



SHOWER

ZT5092

Certificazioni / Certifications

BELGIO

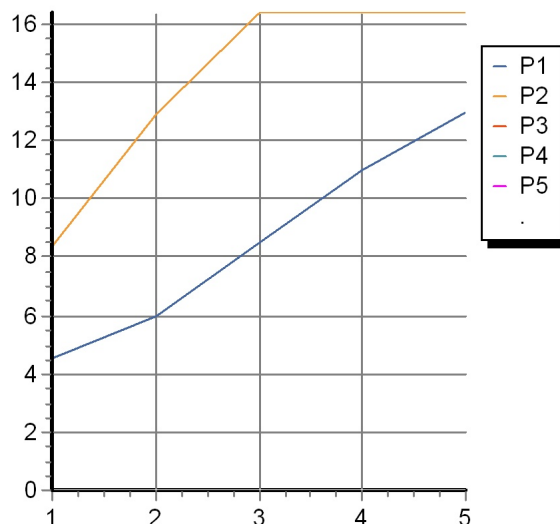
BELGAQUA

SHOWER

ZT5092

Portate / Flowrates (lt/min)

PRESSIONE PRESSURE	1 BAR	2 BAR	3 BAR	4 BAR	5 BAR
SOFFIONE SHOWER HEAD <i>P1</i>	8,4	12,9	16,4	16,4	16,4
DOCCETTA HANDSHOWER <i>P2</i>	4,5	6	8,5	11	13
<i>P3</i>					
<i>P4</i>					
<i>P5</i>					



SHOWER

ZT5092

Pesi e Misure / Weights and Sizes

Peso (Kg) Weight (lb)	9,20 (Kg)	20,28 (lb)
Volume test (dc3) - (in3)	62,66 (dc3)	3823,75 (in3)
h (mm) - (in)	110,00 (mm)	4,33 (in)
L1 (mm) - (in)	445,00 (mm)	17,52 (in)
L2 (mm) - (in)	1280,00 (mm)	50,39 (in)

