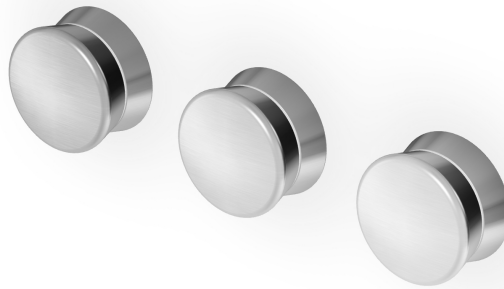


SABLIER

ZSL5695.X

Gruppo incasso vasca-doccia. / 3 hole built-in bath-shower mixer.



Gruppo incasso vasca-doccia a 3 fori, in acciaio inox AISI 316L, con deviatore a 2 vie.









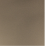
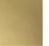


3 hole built-in bath-shower mixer in AISI 316L stainless steel, with 2 way diverter.

R99508

Parte incasso. / Built-in part.



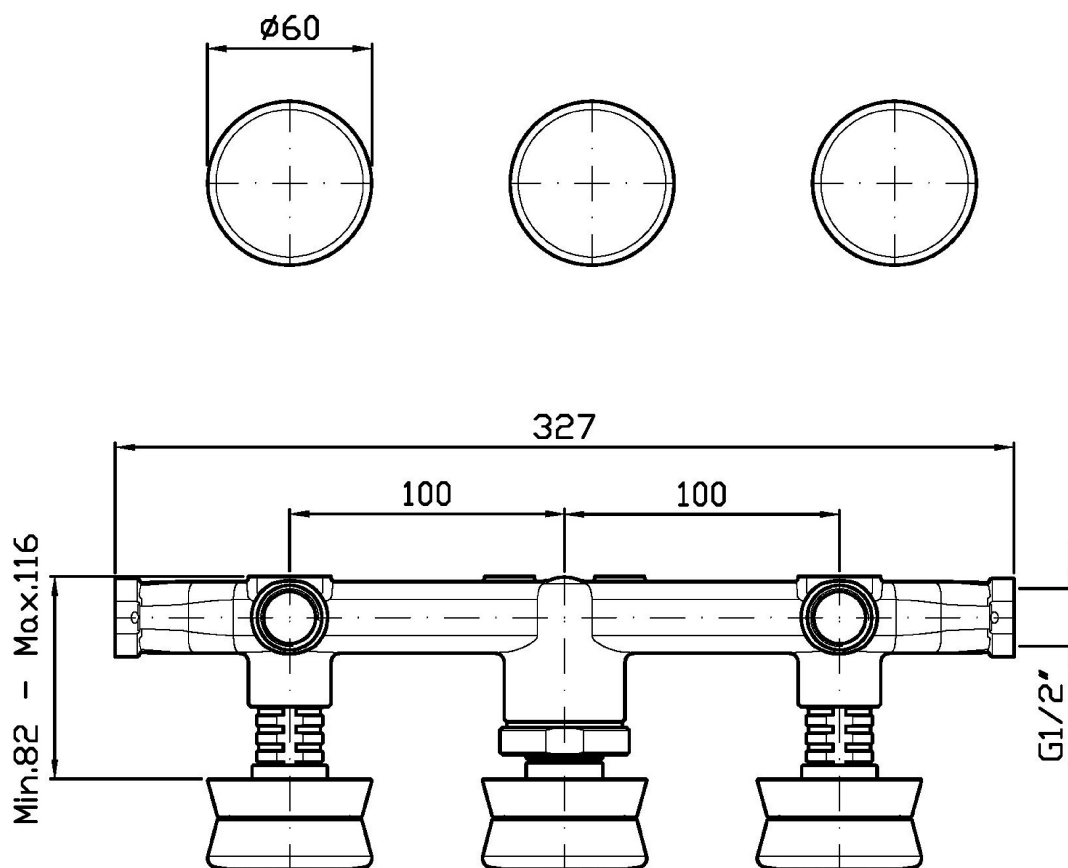
Finiture / Finishes

 X Acciaio inox spazzolato / Brushed stainless steel	 XP21 Brushed PVD chocolate / Brushed PVD chocolate	 XP31 Brushed PVD British gold / Brushed PVD British gold	 XP41 Brushed PVD gold / Brushed PVD gold	 XP81 PVD Brushed Total Black / PVD Brushed Total Black	 XP91 Brushed PVD copper / Brushed PVD copper	 XS Acciaio inox matt / Matt stainless steel
 XSP21 Matt PVD chocolate / Matt PVD chocolate	 XSP31 Matt PVD British gold / Matt PVD British gold	 XSP41 Matt PVD gold / Matt PVD gold	 XSP81 Matt PVD total black / Matt PVD total black	 XSP91 Matt PVD copper / Matt PVD copper		

SABLIER

ZSL5695.X

Disegno Complessivo / Overall Drawing



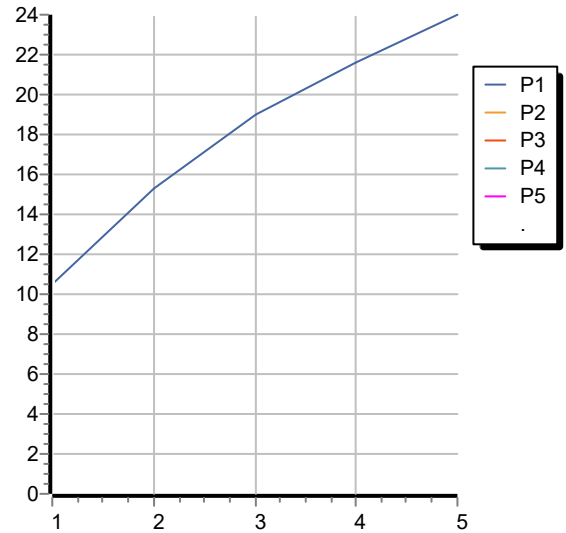
Note / Notes

SABLIER

ZSL5695.X

Portate / Flowrates (lt/min)

PRESSIONE PRESSURE	1 BAR	2 BAR	3 BAR	4 BAR	5 BAR
DEVIATORE <i>P1</i>	10,5	15,3	19	21,6	24
<i>P2</i>					
<i>P3</i>					
<i>P4</i>					
<i>P5</i>					



SABLIER

ZSL5695.X

Pesi e Misure / Weights and Sizes

Peso (Kg) Weight (lb)	2,20 (Kg)	4,85 (lb)
Volume test (dc3) - (in3)	11,01 (dc3)	671,87 (in3)
h (mm) - (in)	90,00 (mm)	3,54 (in)
L1 (mm) - (in)	335,00 (mm)	13,19 (in)
L2 (mm) - (in)	365,00 (mm)	14,37 (in)

