

## PAN S

ZPA555

Miscelatore monocomando bidet. / Single lever bidet mixer.



Miscelatore monocomando bidet con aeratore, scarico da 1 ¼", flessibili di collegamento.  
Water Saving - portata d'acqua uguale o inferiore a 6 l/min.

Single lever bidet mixer with aerator, 1 ¼" pop-up waste, flexible tails.  
Water Saving - water flow rate of 6 l/min or less.

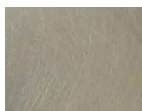
## PAN S

ZPA555

### Finiture / Finishes

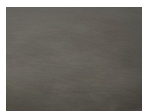


Cromo / Chrome



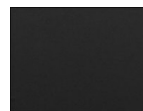
**C3**

Nickel Spazzolato / Brushed Nickel



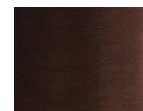
**C51**

Metal Black spazzolato / Brushed Metal Black



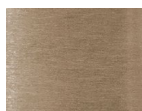
**N6**

Nero opaco / Matt black



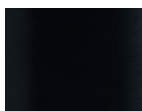
**P21**

PVD brushed chocolate / PVD brushed chocolate



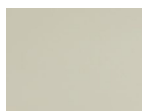
**P31**

Brushed PVD British gold / Brushed PVD British gold



**P81**

Brushed total black PVD / Brushed total black PVD



**J3**

Glossy gesso / Glossy gesso



**K7**

Pearl cipria / Pearl cipria



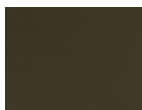
**R6**

Pearl chili / Pearl chili



**V7**

Pearl salvia / Pearl salvia



**V8**

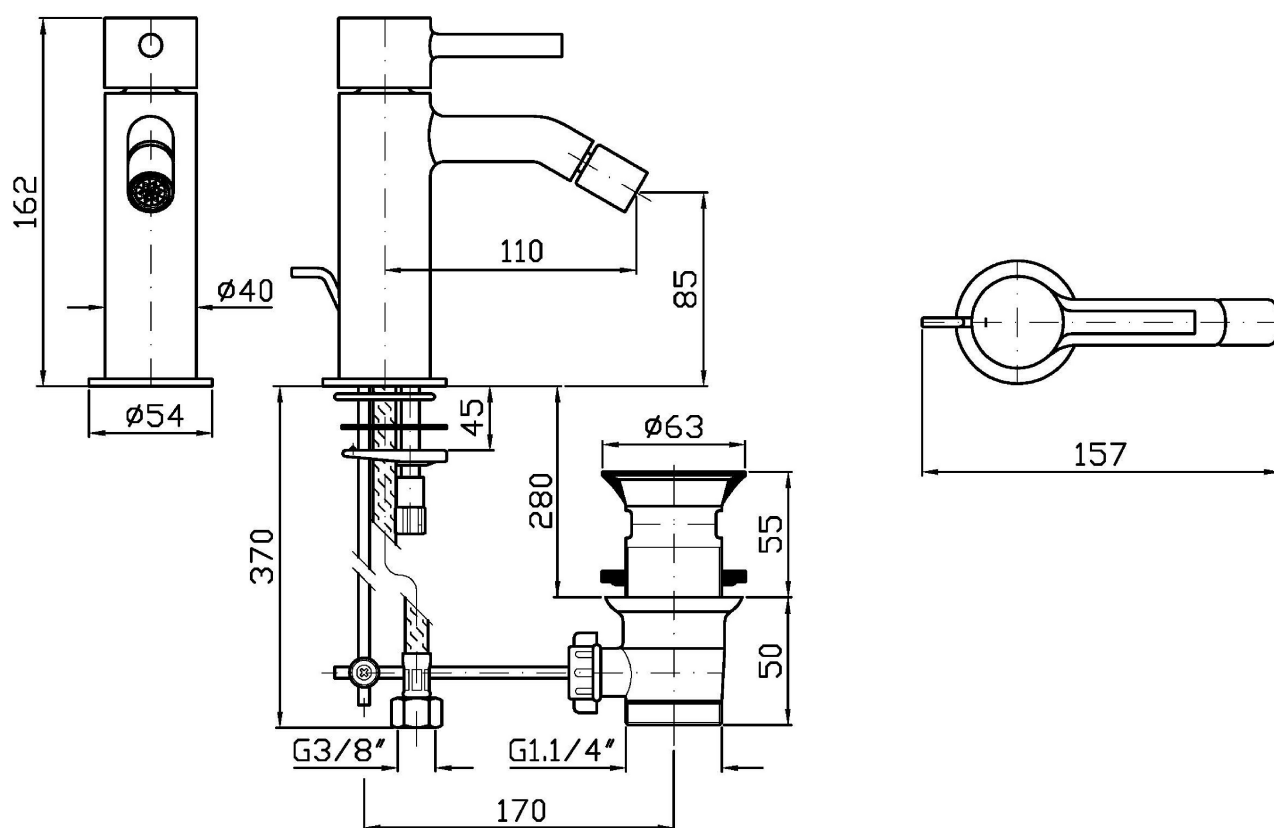
Matt mirto / Matt mirto

### Note / Notes

## PAN S

ZPA555

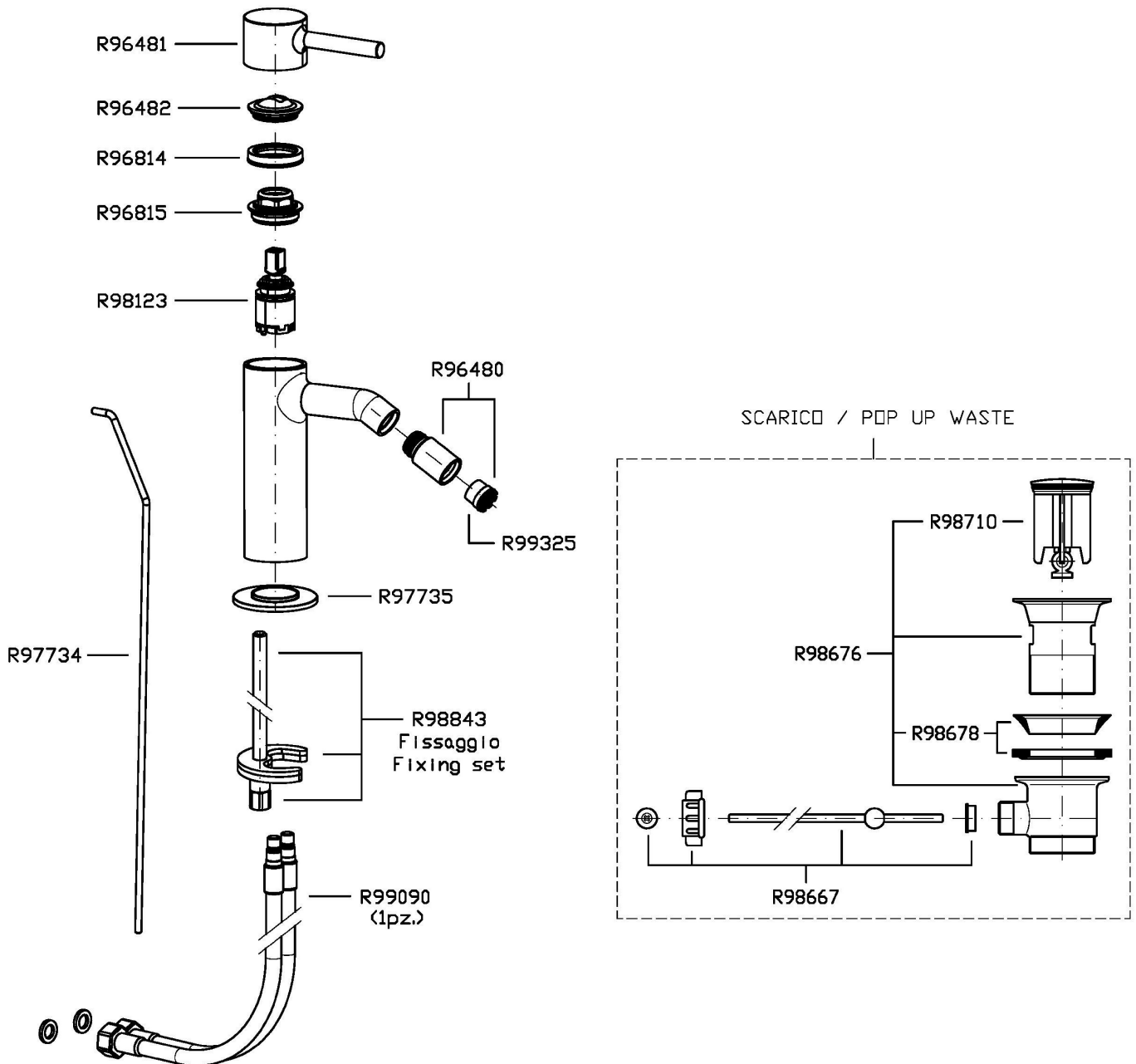
Disegno Complessivo / Overall Drawing



## PAN S

ZPA555

Esplosi / Exploded

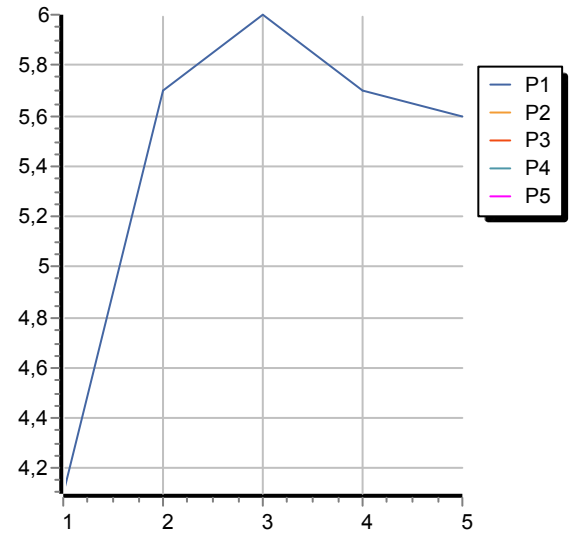


## PAN S

ZPA555

Portate / Flowrates (lt/min)

PRESSIONE PRESSURE	1 BAR	2 BAR	3 BAR	4 BAR	5 BAR
P1 BIDET BIDET	4,1	5,7	6	5,7	5,6
P2					
P3					
P4					
P5					



## PAN S

ZPA555

Pesi e Misure / Weights and Sizes

Peso ( Kg ) Weight ( lb )	1,32 ( Kg )	2,91 ( lb )
Volume test ( dc3 ) - ( in3 )	4,05 ( dc3 )	247,15 ( in3 )
h ( mm ) - ( in )	70,00 ( mm )	2,76 ( in )
L1 ( mm ) - ( in )	150,00 ( mm )	5,91 ( in )
L2 ( mm ) - ( in )	385,00 ( mm )	15,16 ( in )

