

PAN

ZP6725




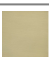

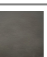



Rubinetto elettronico lavabo a batteria / Electronic basin mixer powered by batteries.



Rubinetto elettronico lavabo con alimentazione a batteria. Senza scarico. Senza miscelazione acqua.
Water Saving - portata d'acqua uguale o inferiore a 6 l/min.

Electronic basin mixer powered by batteries, without pop-up waste. Without mixing water.
Water Saving - water flow rate of 6 l/min or less.

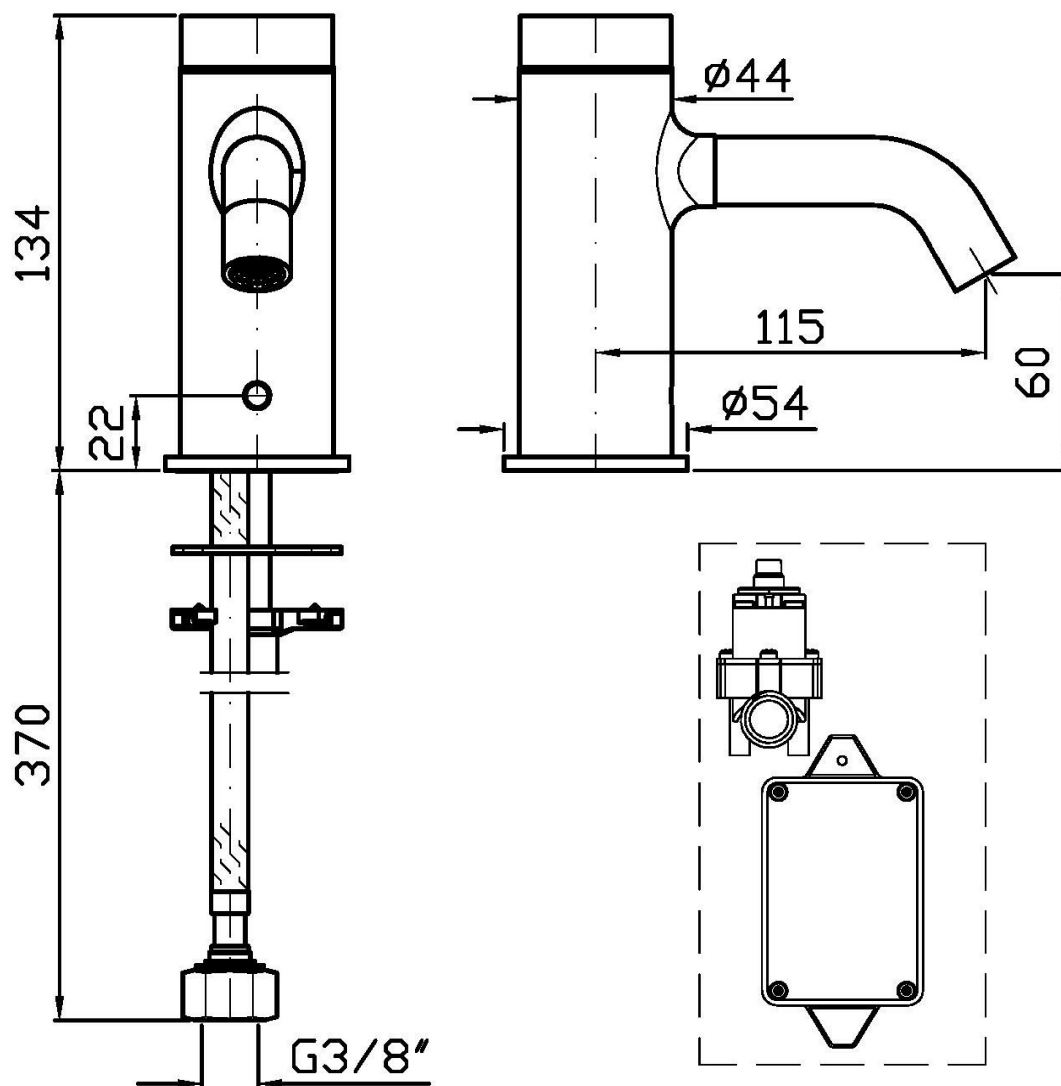
Finiture / Finishes

 Cromo / Chrome	 C3 Nickel Spazzolato / Brushed Nickel	 C8 Nickel Lucido / Polished Nickel	 C40 Oro / Gold	 C41 Oro spazzolato / Brushed Gold	 C50 Metal Black / Metal Black	 C51 Metal Black spazzolato / Brushed Metal Black	 W1 Bianco Opaco Goffrato / Embossed Matt White
 N1 Nero Opaco Goffrato / Embossed Matt Black	 N6 Nero opaco / Matt black						

PAN

ZP6725

Disegno Complessivo / Overall Drawing

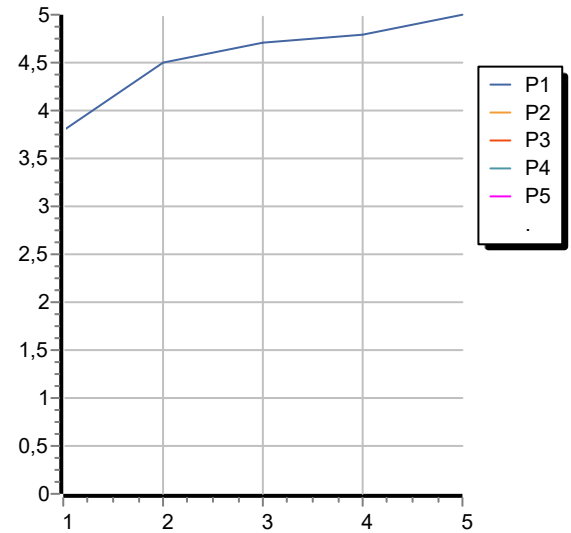


PAN

ZP6725

Portate / Flowrates (lt/min)

PRESSIONE PRESSURE	1 BAR	2 BAR	3 BAR	4 BAR	5 BAR
P1 LAVABO BASIN	3,8	4,5	4,7	4,8	5
P2					
P3					
P4					
P5					



PAN

ZP6725

Pesi e Misure / Weights and Sizes

Peso (Kg) Weight (lb)	2,00 (Kg)	4,41 (lb)
Volume test (dc3) - (in3)	7,50 (dc3)	457,68 (in3)
h (mm) - (in)	90,00 (mm)	3,54 (in)
L1 (mm) - (in)	250,00 (mm)	9,84 (in)
L2 (mm) - (in)	333,00 (mm)	13,11 (in)

