

Marchio / Brand ZUCCHETTI

Classe / Class WW

## MISCELLANEOUS

ZP6722

Rubinetto incasso dritto. / Wall valve.



Rubinetto incasso dritto da  $\frac{3}{4}$ " F x  $\frac{3}{4}$ " F .

$\frac{3}{4}$ " wall valve.

R99637



Parte incasso. / Built-in part.

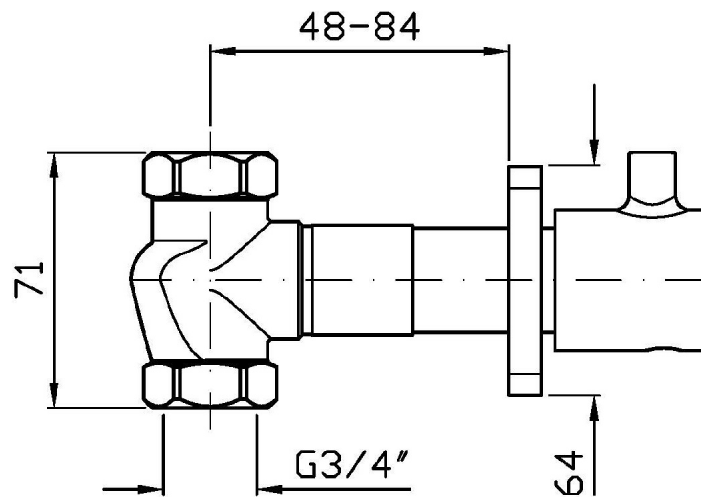
## Finiture / Finishes

	 C3	 C8	 C40	 C41	 C50	 C51	 W1
Cromo / Chrome	Nickel Spazzolato / Brushed Nickel	Nickel Lucido / Polished Nickel	Oro / Gold	Oro spazzolato / Brushed Gold	Metal Black / Metal Black	Metal Black spazzolato / Brushed Metal Black	Bianco Opaco Goffrato / Embossed Matt White
 N1	 N6						
Nero Opaco Goffrato / Embossed Matt Black	Nero opaco / Matt black						

## MISCELLANEOUS

ZP6722

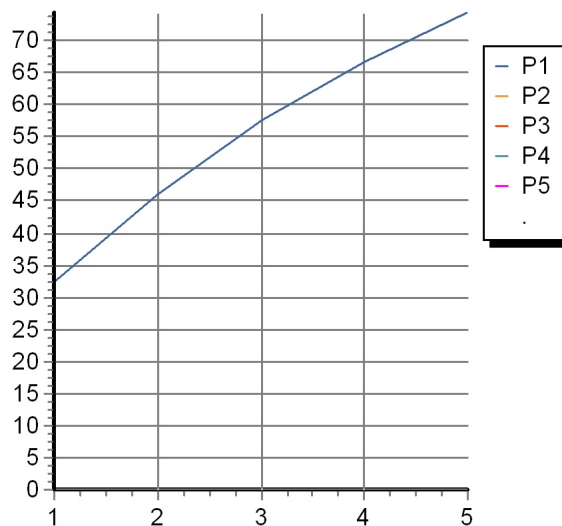
Disegno Complessivo / Overall Drawing



## MISCELLANEOUS

ZP6722 Portate / Flowrates (lt/min)

PRESSIONE PRESSURE	1 BAR	2 BAR	3 BAR	4 BAR	5 BAR
1 RUBINETTO APERTO <i>P1</i>	32,3	46	57,5	66,5	74,4
<i>P2</i>					
<i>P3</i>					
<i>P4</i>					
<i>P5</i>					



## MISCELLANEOUS

ZP6722 Pesi e Misure / Weights and Sizes

Peso ( Kg ) Weight ( lb )	0,56 ( Kg )	1,23 ( lb )
Volume test ( dc3 ) - ( in3 )	1,21 ( dc3 )	73,84 ( in3 )
h ( mm ) - ( in )	73,00 ( mm )	2,87 ( in )
L1 ( mm ) - ( in )	127,00 ( mm )	5,00 ( in )
L2 ( mm ) - ( in )	130,00 ( mm )	5,12 ( in )

