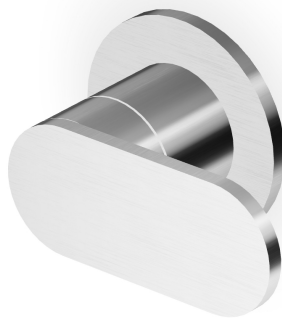


## OCTO X

ZOX5729.X

Rubinetto incasso / Wall valve.



Rubinetto incasso da 1/2", in acciaio inox AISI 316L.

1/2" wall valve in AISI 316L stainless steel.

R99779

Parte incasso. / Built-in part.



## OCTO X

ZOX5729.X

### Finiture / Finishes



**X**

Acciaio inox spazzolato /  
Brushed stainless steel



**XP21**

Brushed PVD chocolate /  
Brushed PVD chocolate



**XP31**

Brushed PVD British gold /  
Brushed PVD British gold



**XP41**

Brushed PVD gold / Brushed  
PVD gold



**XP81**

PVD Brushed Total Black /  
PVD Brushed Total Black



**XP91**

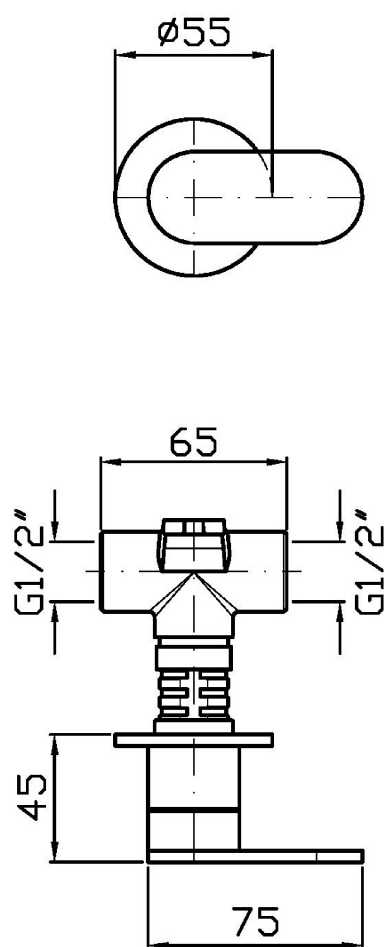
Brushed PVD copper /  
Brushed PVD copper

### Note / Notes

## OCTO X

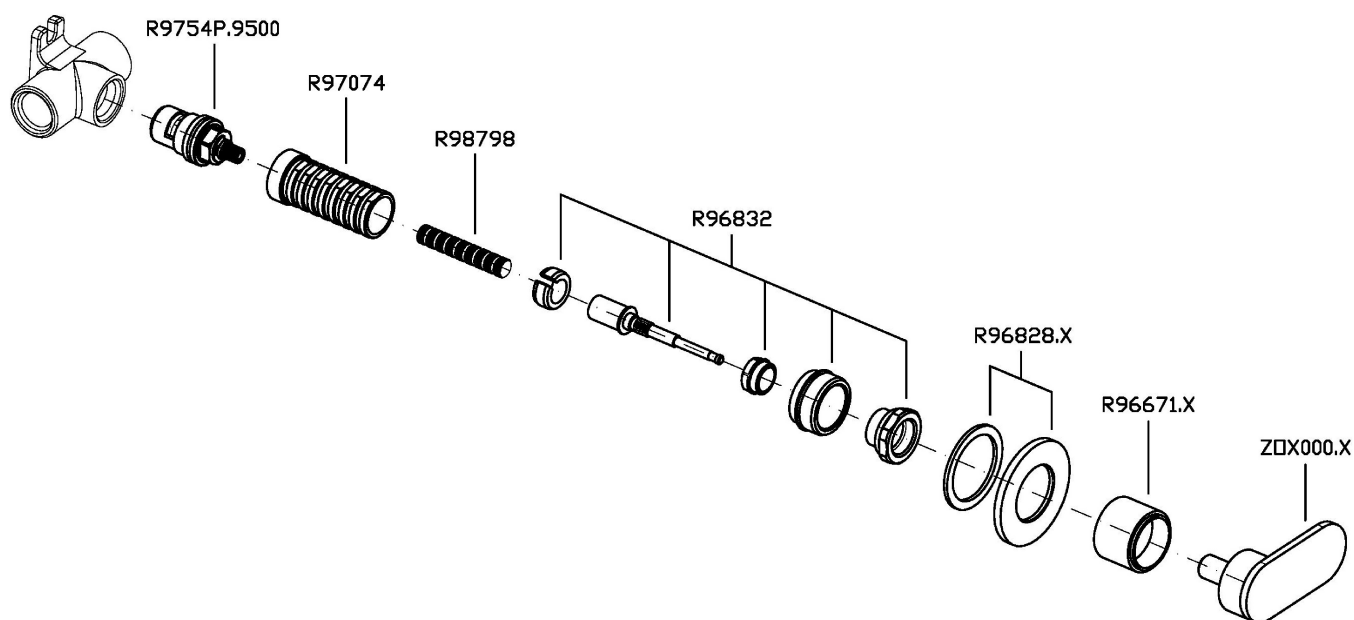
ZOX5729.X

Disegno Complessivo / Overall Drawing



## OCTO X

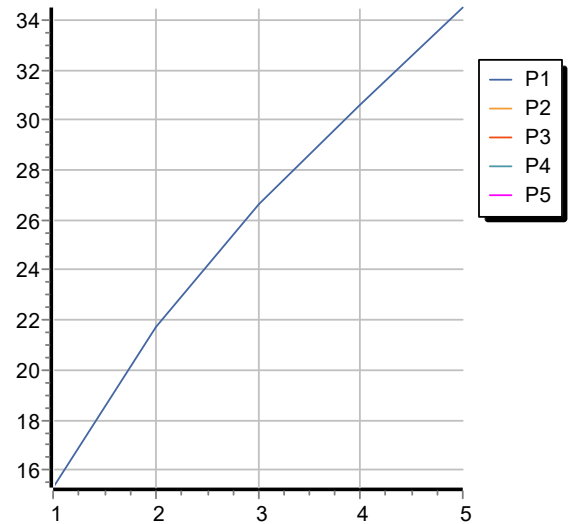
ZOX5729.X      Esplosi / Exploded



## OCTO X

### ZOX5729.X Portate / Flowrates (lt/min)

PRESSIONE PRESSURE	1 BAR	2 BAR	3 BAR	4 BAR	5 BAR
1 RUBINETTO APERTO P1 1 TAP OPENED	15,3	21,7	26,6	30,6	34,5
P2					
P3					
P4					
P5					



## OCTO X

### ZOX5729.X Pesi e Misure / Weights and Sizes

Peso ( Kg ) Weight ( lb )	0,50 ( Kg )	1,10 ( lb )
Volume test ( dc3 ) - ( in3 )	1,21 ( dc3 )	73,84 ( in3 )
h ( mm ) - ( in )	73,00 ( mm )	2,87 ( in )
L1 ( mm ) - ( in )	127,00 ( mm )	5,00 ( in )
L2 ( mm ) - ( in )	130,00 ( mm )	5,12 ( in )

