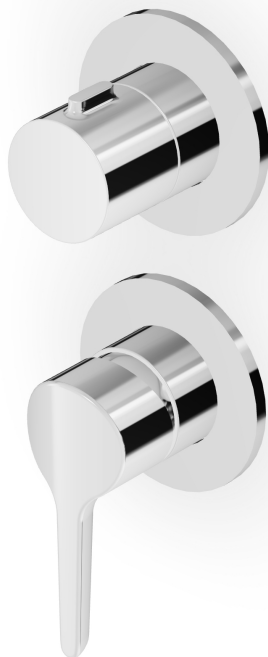


## MEDAMEDA

ZMM778

Miscelatore monocomando vasca-doccia incasso. / Built-in single lever bath-shower mixer.



Miscelatore monocomando vasca-doccia incasso con deviatore a 2 vie a rotazione.

Built-in single lever bath-shower mixer with 2 way rotation diverter.

R96725

Parte incasso / Built-in part



## MEDAMEDA

ZMM778

Finiture / Finishes



Cromo / Chrome



**C3**

Nickel Spazzolato / Brushed Nickel



**C8**

Nickel Lucido / Polished Nickel



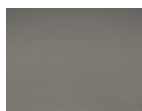
**C40**

Oro / Gold



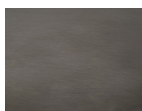
**C41**

Oro spazzolato / Brushed Gold



**C50**

Metal Black / Metal Black



**C51**

Metal Black spazzolato / Brushed Metal Black



**N1**

Nero Opaco Goffrato / Embossed Matt Black



**P31**

Brushed PVD British gold / Brushed PVD British gold



**P81**

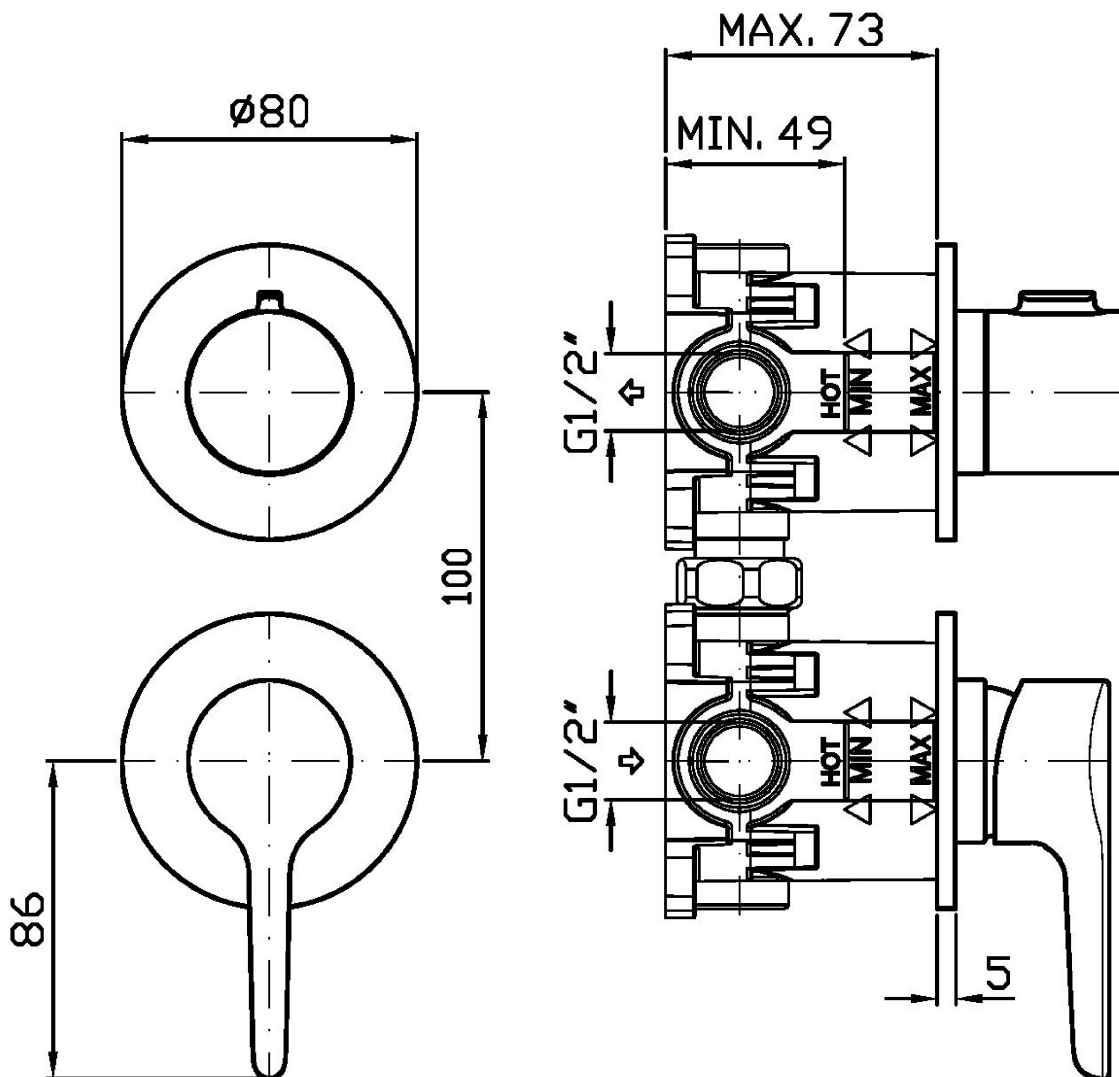
Brushed total black PVD / Brushed total black PVD

Note / Notes

## MEDAMEDA

ZMM778

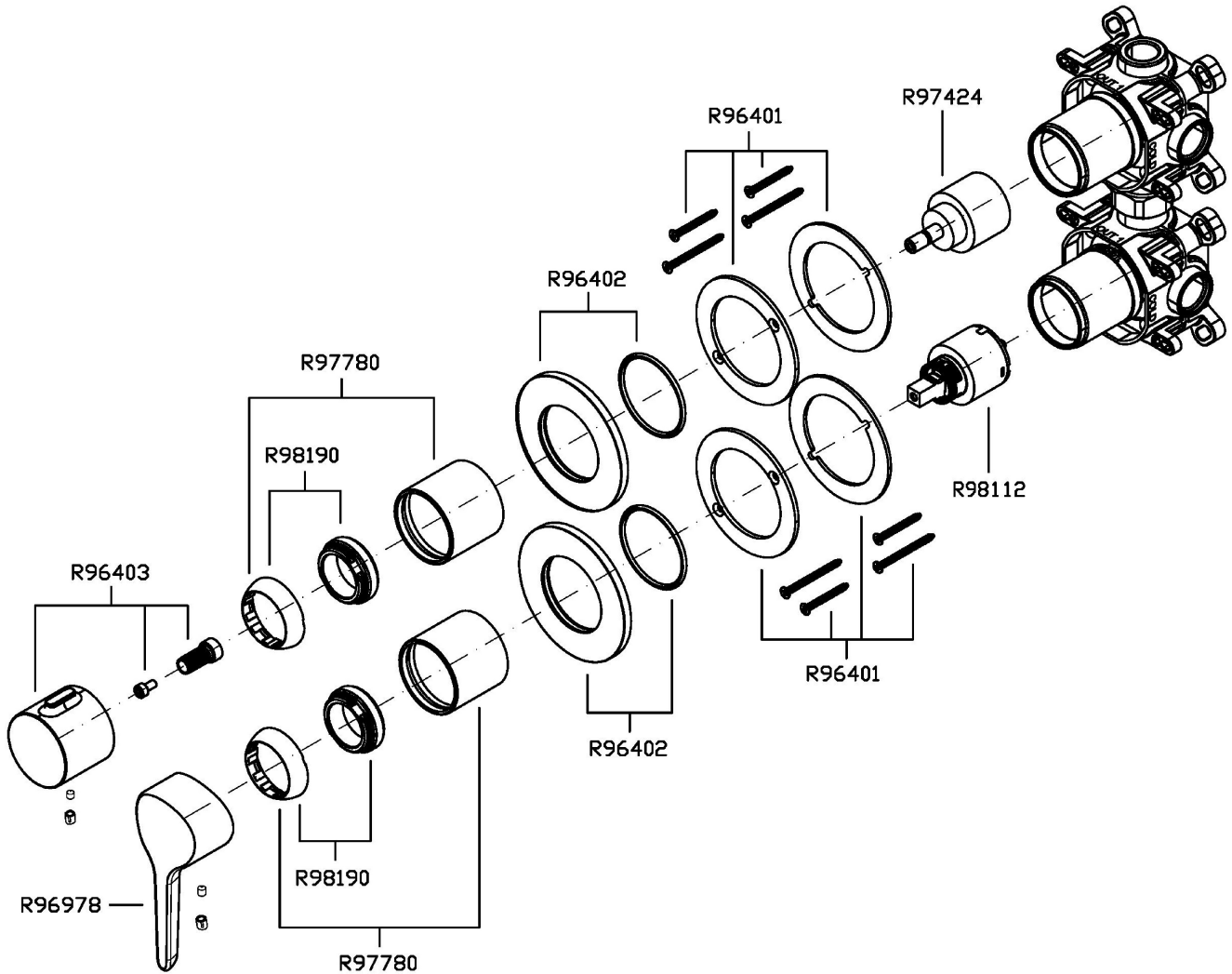
Disegno Complessivo / Overall Drawing



## MEDAMEDA

ZMM778

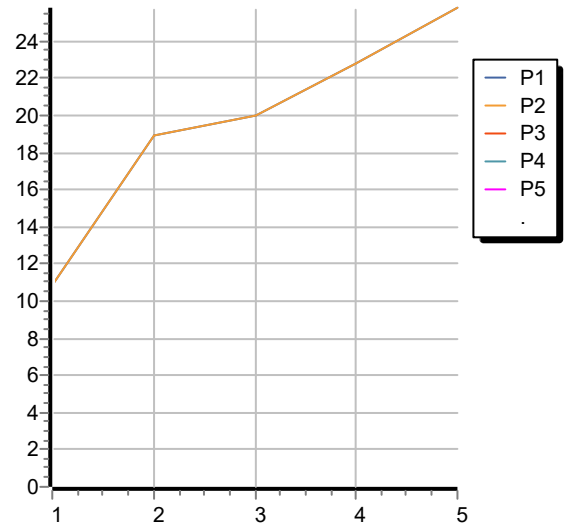
Esplosi / Exploded



## MEDAMEDA

### ZMM778 Portate / Flowrates (lt/min)

PRESSIONE PRESSURE	1 BAR	2 BAR	3 BAR	4 BAR	5 BAR
USCITA PRIMARIA PRIMARY OUTLET P <sub>1</sub>	10,9	18,9	20	22,8	25,8
USCITA SECONDARIA SECONDARY OUTLET P <sub>2</sub>	10,9	18,9	20	22,8	25,8
P <sub>3</sub>					
P <sub>4</sub>					
P <sub>5</sub>					



## MEDAMEDA

### ZMM778 Pesì e Misure / Weights and Sizes

Peso ( Kg ) Weight ( lb )	0,90 ( Kg )	1,98 ( lb )
Volume test ( dc3 ) - ( in3 )	3,32 ( dc3 )	202,60 ( in3 )
h ( mm ) - ( in )	93,00 ( mm )	3,66 ( in )
L1 ( mm ) - ( in )	162,00 ( mm )	6,38 ( in )
L2 ( mm ) - ( in )	220,00 ( mm )	8,66 ( in )

