

ISY22

ZIS4804.P91

Termostatico incasso doccia con 4 rubinetti d'arresto. / Built-in thermostatic shower mixer 4 stop valves.



Termostatico incasso doccia da 3/4", con 4 rubinetti d'arresto. Installazione possibile sia in verticale che in orizzontale.

3/4" built-in thermostatic shower mixer with 4 stop valves. Both vertical and horizontal installation possible.

R96733

Parte incasso / Built-in part

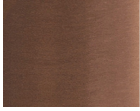


Marchio / Brand ZUCCHETTI

Classe / Class WW

ISY22

ZIS4804.P91 Finiture / Finishes



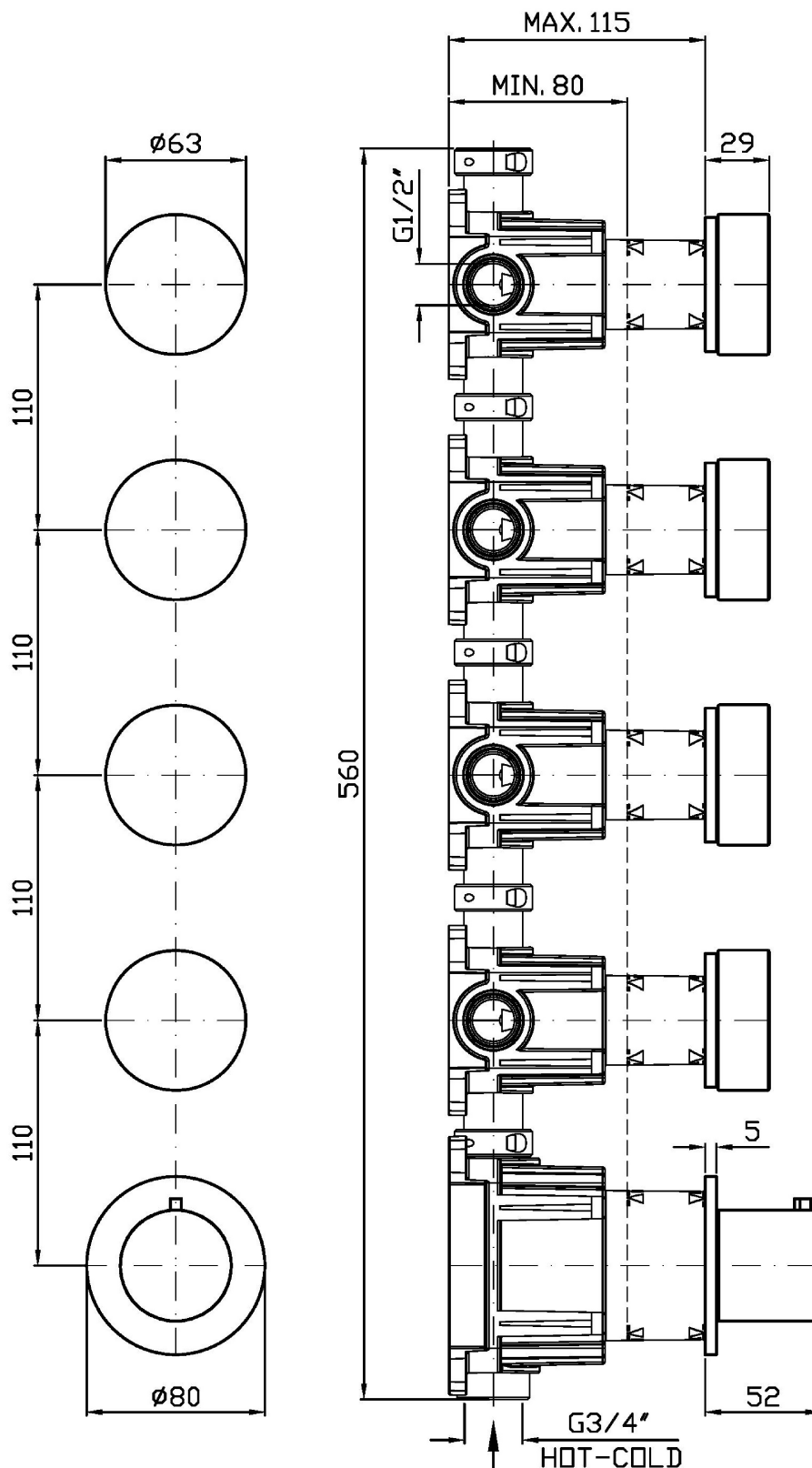
P91

Brushed PVD Copper /
Brushed PVD Copper

Note / Notes

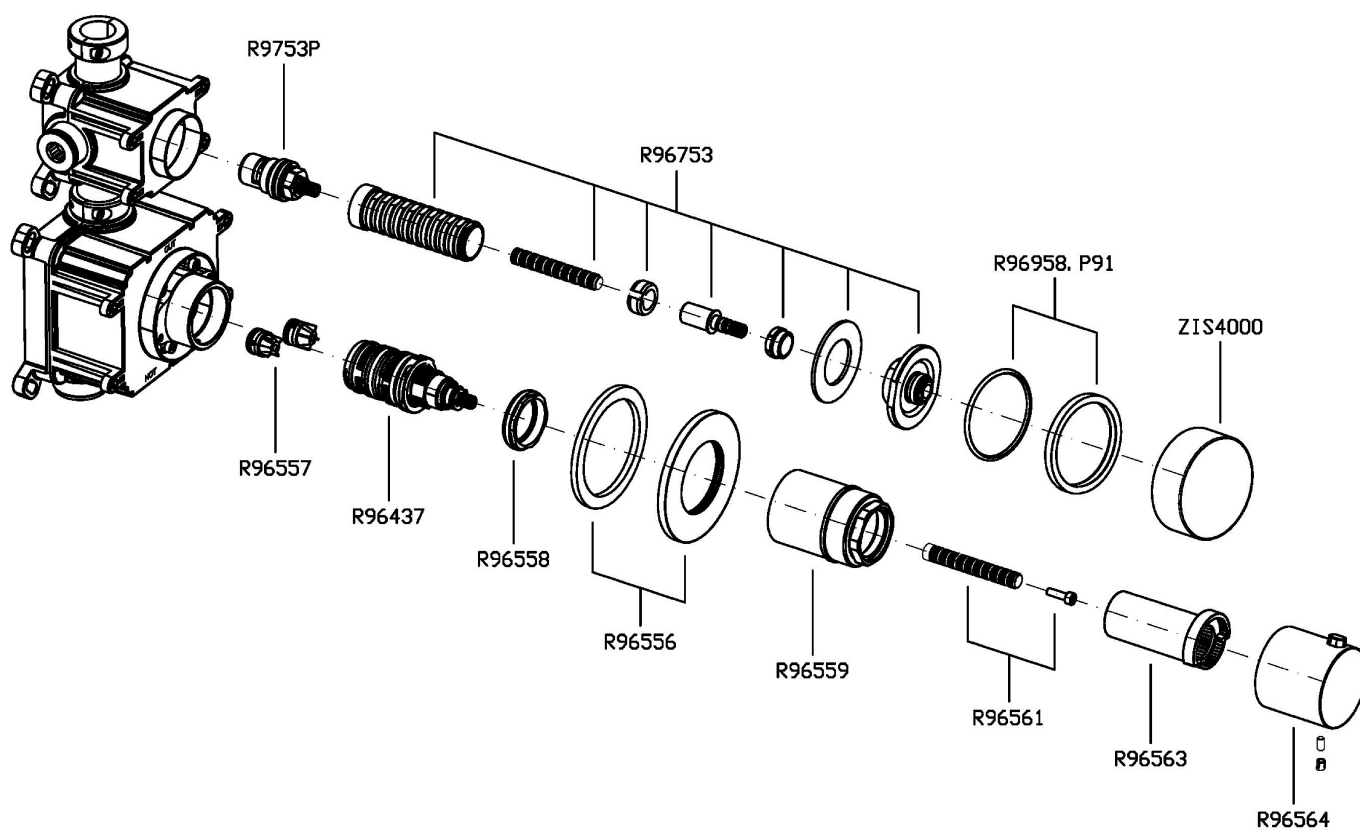
ISY22

ZIS4804.P91 Disegno Complessivo / Overall Drawing



ISY22

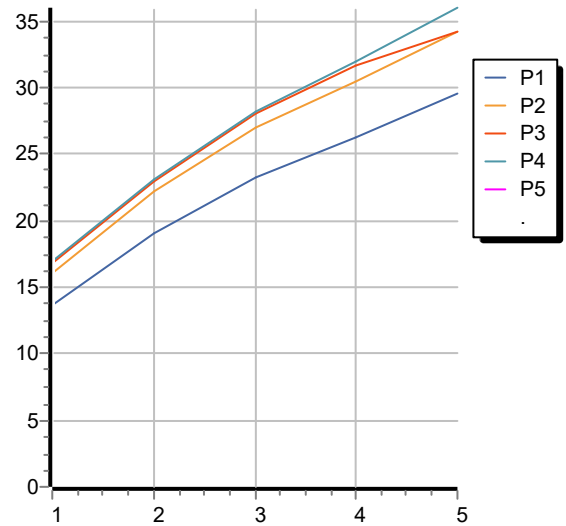
ZIS4804.P91 Esplosi / Exploded



ISY22

ZIS4804.P91 Portate / Flowrates (lt/min)

| PRESSIONE PRESSURE | 1 BAR | 2 BAR | 3 BAR | 4 BAR | 5 BAR |
|--|-------|-------|-------|-------|-------|
| 1 RUBINETTO APERTO <i>P1</i> | 13,7 | 19,1 | 23,2 | 26,2 | 29,5 |
| 2 RUBINETTO APERTI 2 TAPS OPENED <i>P2</i> | 16,1 | 22,2 | 27 | 30,5 | 34,2 |
| 3 RUBINETTO APERTI 3 TAPS OPENED <i>P3</i> | 16,8 | 23 | 28 | 31,6 | 34,2 |
| 4 RUBINETTO APERTI 4 TAPS OPENED <i>P4</i> | 17 | 23,1 | 28,2 | 32 | 36 |
| <i>P5</i> | | | | | |



ISY22

ZIS4804.P91 Pesi e Misure / Weights and Sizes

| | | |
|-------------------------------|---------------|----------------|
| Peso (Kg) Weight (lb) | 2,10 (Kg) | 4,63 (lb) |
| Volume test (dc3) - (in3) | 11,01 (dc3) | 671,87 (in3) |
| h (mm) - (in) | 90,00 (mm) | 3,54 (in) |
| L1 (mm) - (in) | 335,00 (mm) | 13,19 (in) |
| L2 (mm) - (in) | 365,00 (mm) | 14,37 (in) |

