

## JINGLE

ZIN775

Miscelatore monocomando vasca-doccia incasso. / Built-in single lever bath-shower mixer.



Miscelatore monocomando vasca-doccia incasso con deviatore automatico.

Built-in single lever bath-shower mixer with automatic diverter.

R96715

Parte incasso / Built-in part



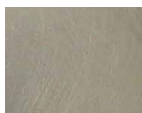
## JINGLE

ZIN775

### Finiture / Finishes



Croma / Chrome



**C3**

Nickel Spazzolato / Brushed Nickel



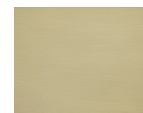
**C8**

Nickel Lucido / Polished Nickel



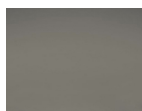
**C40**

Oro / Gold



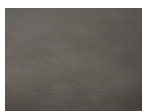
**C41**

Oro spazzolato / Brushed Gold



**C50**

Metal Black / Metal Black



**C51**

Metal Black spazzolato / Brushed Metal Black



**W1**

Bianco Opaco Goffrato / Embossed Matt White



**N1**

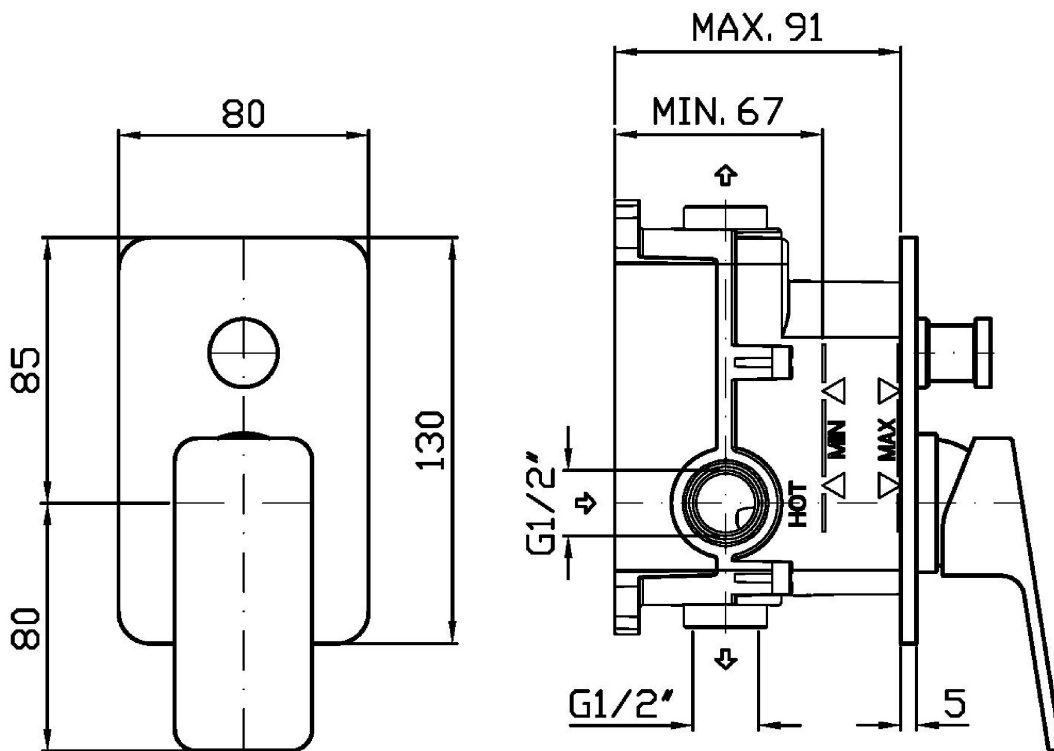
Nero Opaco Goffrato / Embossed Matt Black

### Note / Notes

## JINGLE

ZIN775

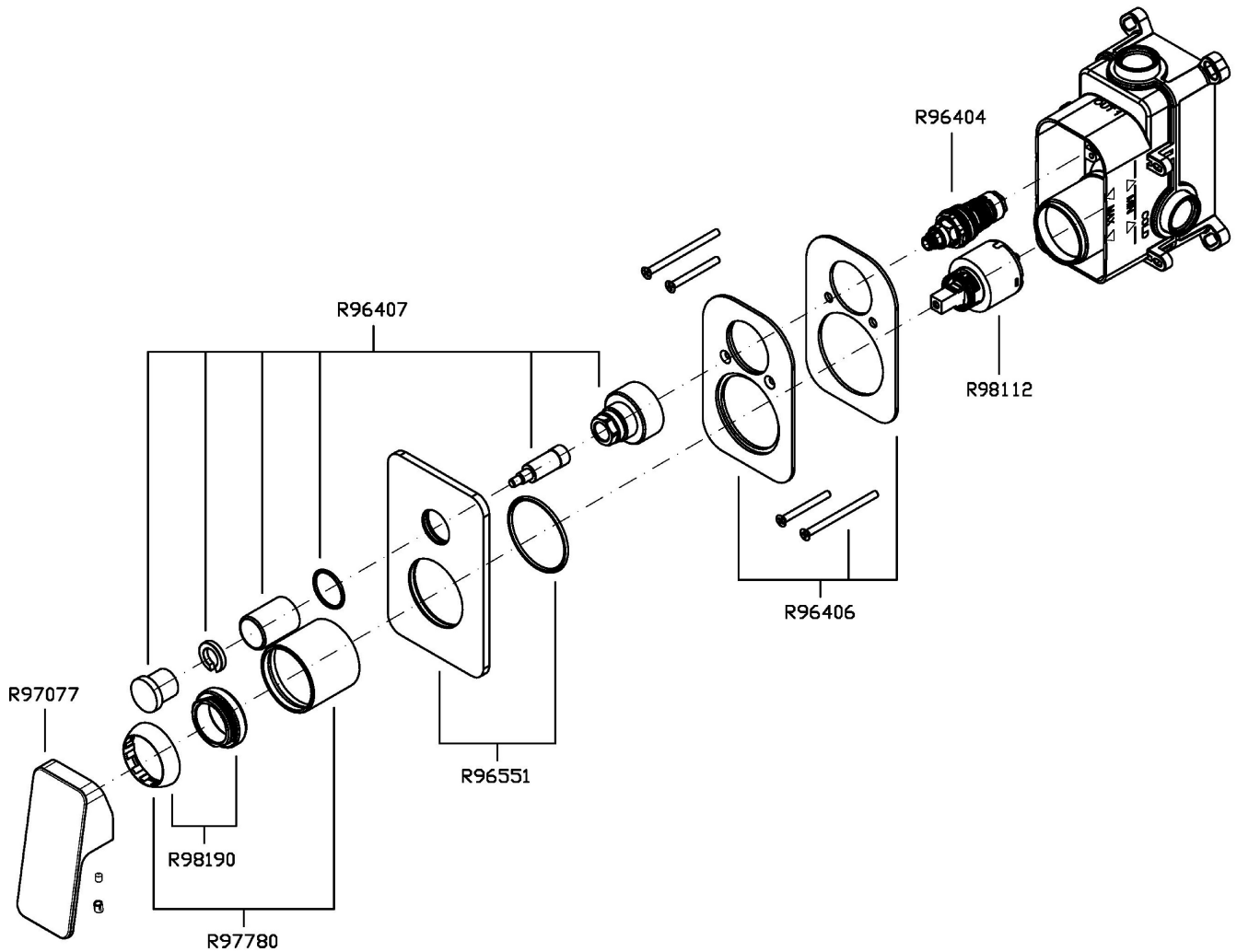
Disegno Complessivo / Overall Drawing



## JINGLE

ZIN775

Esplosi / Exploded

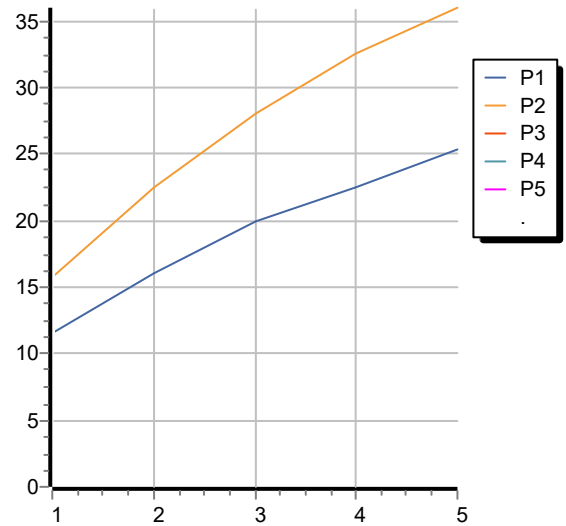


## JINGLE

ZIN775

Portate / Flowrates (lt/min)

PRESSIONE PRESSURE	1 BAR	2 BAR	3 BAR	4 BAR	5 BAR
USCITA PRIMARIA PRIMARY OUTLET <i>P1</i>	11,6	16,1	20	22,5	25,3
USCITA SECONDARIA SECONDARY OUTLET <i>P2</i>	15,8	22,5	28	32,5	36
<i>P3</i>					
<i>P4</i>					
<i>P5</i>					



## JINGLE

ZIN775

Pesi e Misure / Weights and Sizes

Peso ( Kg ) Weight ( lb )	0,45 ( Kg )	0,99 ( lb )
Volume test ( dc3 ) - ( in3 )	3,32 ( dc3 )	202,60 ( in3 )
h ( mm ) - ( in )	93,00 ( mm )	3,66 ( in )
L1 ( mm ) - ( in )	162,00 ( mm )	6,38 ( in )
L2 ( mm ) - ( in )	220,00 ( mm )	8,66 ( in )

