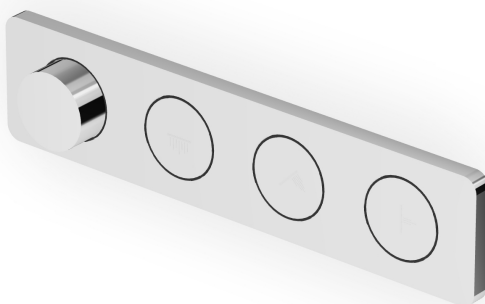


## HOOP

**ZHO824**

Termostatico incasso doccia a 3 pulsanti. / Built-in thermostatic shower mixer, with 3 on-off buttons.



Termostatico incasso doccia da 1/2", combinazione con 3 pulsanti on-off per soffione, doccetta e soffioni laterali. Installazione possibile sia in verticale che in orizzontale.

1/2" built-in thermostatic shower mixer, arrangement with 3 on-off buttons for shower head, handshower and lateral shower heads. Both vertical and horizontal possible

**R96703**

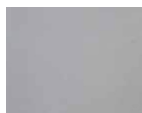
Parte incasso / Built-in part



## HOOP

ZHO824

### Finiture / Finishes



Croma / Chrome

**C3**

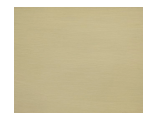
Nickel Spazzolato / Brushed Nickel

**C8**

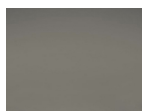
Nickel Lucido / Polished Nickel

**C40**

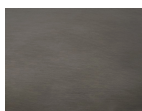
Oro / Gold

**C41**

Oro spazzolato / Brushed Gold

**C50**

Metal Black / Metal Black

**C51**

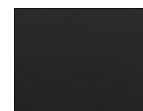
Metal Black spazzolato / Brushed Metal Black

**W1**

Bianco Opaco Goffrato / Embossed Matt White

**N1**

Nero Opaco Goffrato / Embossed Matt Black

**N6**

Nero opaco / Matt black

**P21**

PVD brushed chocolate / PVD brushed chocolate

**P31**

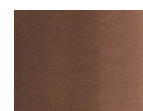
Brushed PVD British gold / Brushed PVD British gold

**P41**

PVD Oro Spazzolato / PVD Brushed Gold

**P81**

Brushed total black PVD / Brushed total black PVD

**P91**

Brushed PVD Copper / Brushed PVD Copper

**J3**

Glossy gesso / Glossy gesso

**K7**

Pearl cipria / Pearl cipria

**R6**

Pearl chili / Pearl chili

**V7**

Pearl salvia / Pearl salvia

**V8**

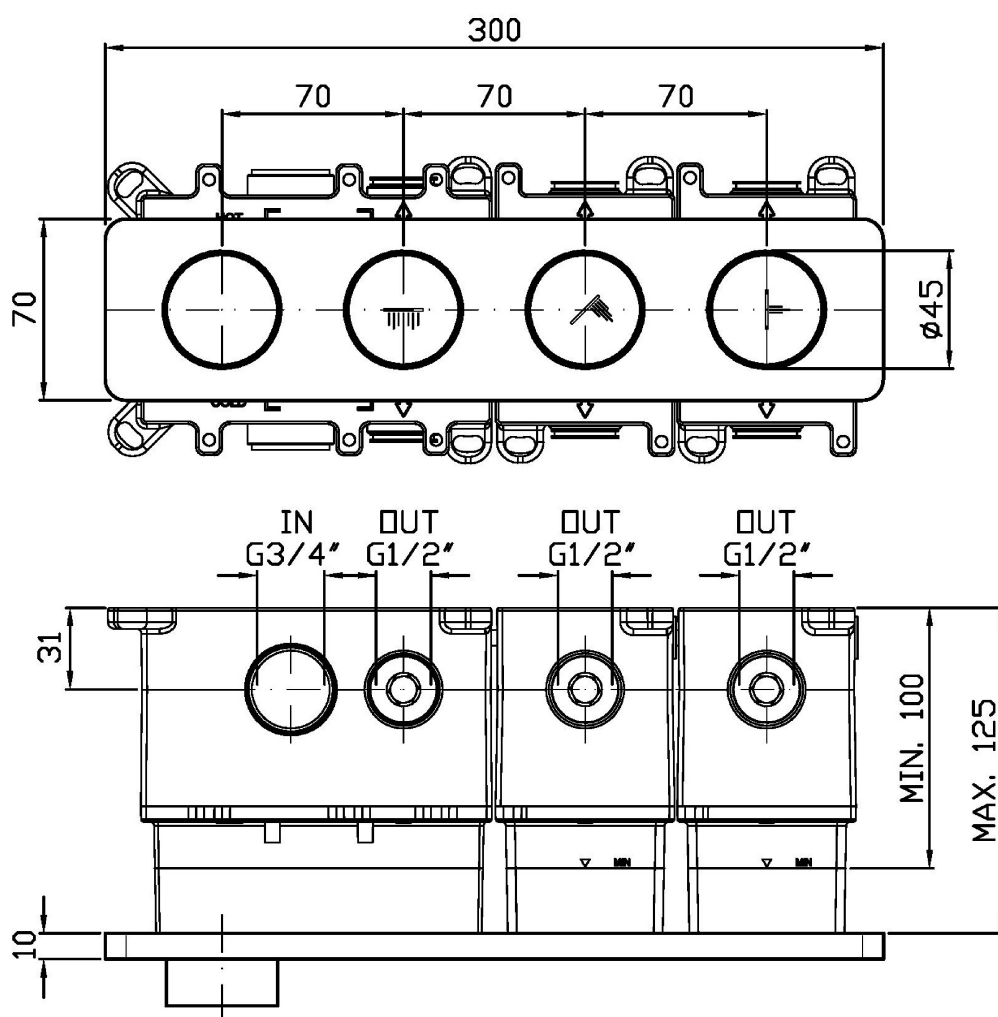
Matt mirto / Matt mirto

### Note / Notes

## HOOP

ZHO824

Disegno Complessivo / Overall Drawing

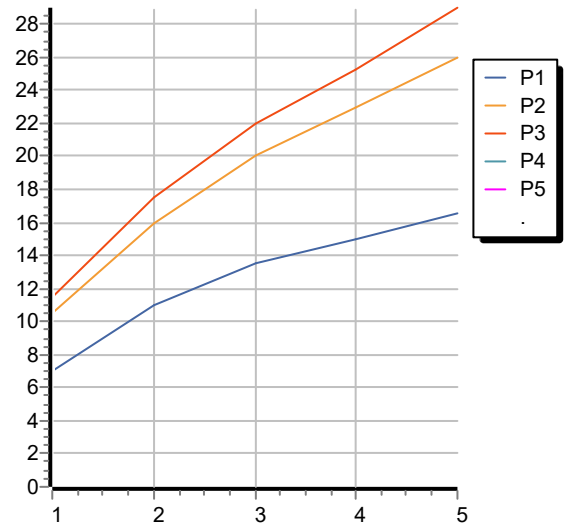


## HOOP

ZHO824

Portate / Flowrates (lt/min)

PRESSIONE PRESSURE	1 BAR	2 BAR	3 BAR	4 BAR	5 BAR
1 RUBINETTO APERTO <i>P1</i>	7	11	13,5	15	16,5
2 RUBINETTO APERTI <i>P2</i> 2 TAPS OPENED	10,5	16	20	23	26
3 RUBINETTO APERTI <i>P3</i> 3 TAPS OPENED	11,5	17,5	22	25,2	29
<i>P4</i>					
<i>P5</i>					



## HOOP

ZHO824

Pesi e Misure / Weights and Sizes

Peso ( Kg ) Weight ( lb )	1,95 ( Kg )	4,30 ( lb )
Volume test ( dc3 ) - ( in3 )	7,50 ( dc3 )	457,68 ( in3 )
h ( mm ) - ( in )	90,00 ( mm )	3,54 ( in )
L1 ( mm ) - ( in )	250,00 ( mm )	9,84 ( in )
L2 ( mm ) - ( in )	333,00 ( mm )	13,11 ( in )

