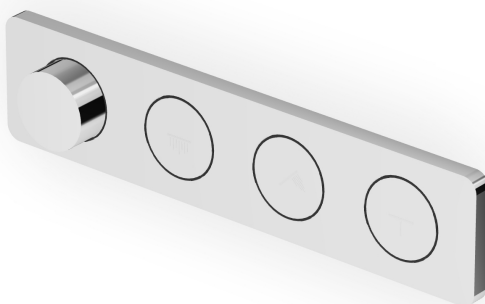


## HOOP

### ZHO822

Termostatico incasso doccia a 3 pulsanti. / Built-in thermostatic shower mixer, with 3 on-off buttons.

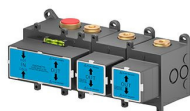


Termostatico incasso doccia da 1/2", combinazione con 3 pulsanti on-off per soffione, doccia e getto a lama. Installazione possibile sia in verticale che in orizzontale.

1/2" built-in thermostatic shower mixer, arrangement with 3 on-off buttons for shower head, handshower and blade jet. Both vertical and horizontal installation possible.

R96703

Parte incasso / Built-in part



## HOOP

ZHO822

### Finiture / Finishes



Cromo / Chrome



**C3**

Nickel Spazzolato / Brushed Nickel



**C8**

Nickel Lucido / Polished Nickel



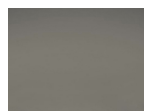
**C40**

Oro / Gold



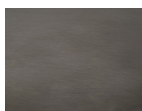
**C41**

Oro spazzolato / Brushed Gold



**C50**

Metal Black / Metal Black



**C51**

Metal Black spazzolato / Brushed Metal Black



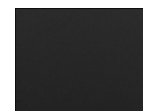
**W1**

Bianco Opaco Goffrato / Embossed Matt White



**N1**

Nero Opaco Goffrato / Embossed Matt Black



**N6**

Nero opaco / Matt black



**P21**

PVD brushed chocolate / PVD brushed chocolate



**P31**

Brushed PVD British gold / Brushed PVD British gold



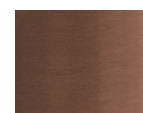
**P41**

PVD Oro Spazzolato / PVD Brushed Gold



**P81**

Brushed total black PVD / Brushed total black PVD



**P91**

Brushed PVD Copper / Brushed PVD Copper



**J3**

Glossy gesso / Glossy gesso



**K7**

Pearl cipria / Pearl cipria



**R6**

Pearl chili / Pearl chili



**V7**

Pearl salvia / Pearl salvia



**V8**

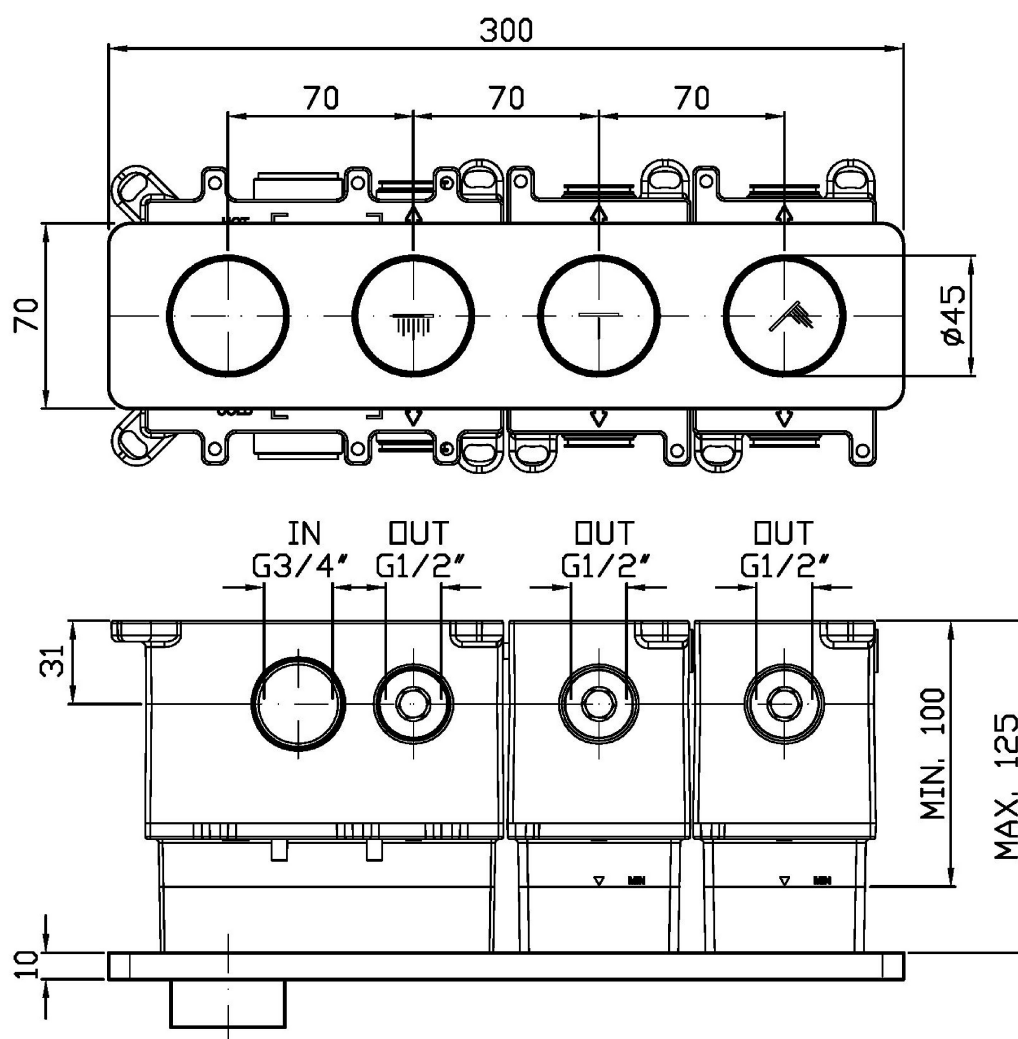
Matt mirto / Matt mirto

### Note / Notes

## HOOP

ZHO822

Disegno Complessivo / Overall Drawing

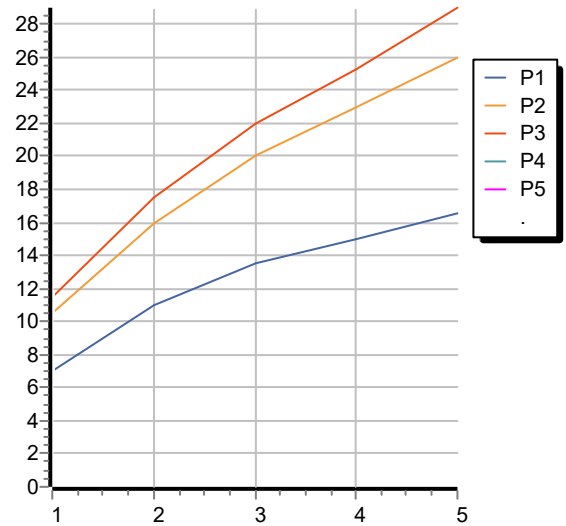


## HOOP

ZHO822

Portate / Flowrates (lt/min)

PRESSIONE PRESSURE	1 BAR	2 BAR	3 BAR	4 BAR	5 BAR
1 RUBINETTO APERTO <i>P1</i>	7	11	13,5	15	16,5
2 RUBINETTO APERTI 2 TAPS OPENED <i>P2</i>	10,5	16	20	23	26
3 RUBINETTO APERTI 3 TAPS OPENED <i>P3</i>	11,5	17,5	22	25,2	29
<i>P4</i>					
<i>P5</i>					



## HOOP

ZHO822

Pesi e Misure / Weights and Sizes

Peso ( Kg ) Weight ( lb )	1,95 ( Kg )	4,30 ( lb )
Volume test ( dc3 ) - ( in3 )	7,50 ( dc3 )	457,68 ( in3 )
h ( mm ) - ( in )	90,00 ( mm )	3,54 ( in )
L1 ( mm ) - ( in )	250,00 ( mm )	9,84 ( in )
L2 ( mm ) - ( in )	333,00 ( mm )	13,11 ( in )

