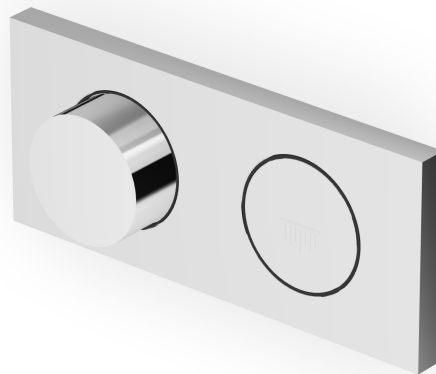


HOOP

ZHO781

Termostatico incasso doccia a pulsante. / Built-in thermostatic shower mixer, with on-off button.



Termostatico incasso doccia da 1/2", combinazione con pulsante on-off per soffi one. Installazione possibile sia in verticale che in orizzontale.






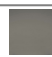








1/2" built-in thermostatic shower mixer, arrangement with on-off button for shower head. Both vertical and horizontal installation possible.

R96701

Parte incasso / Built-in part



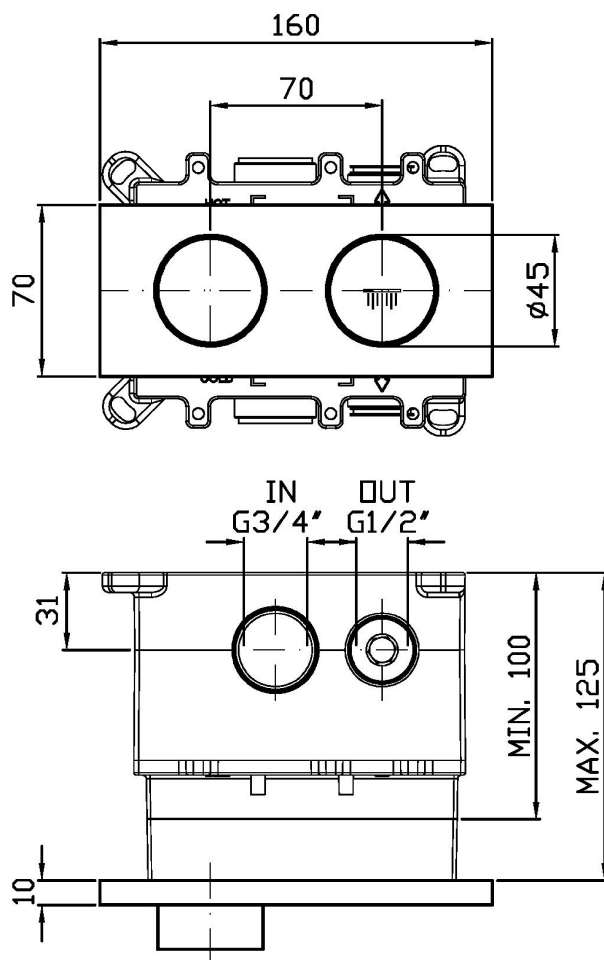
Finiture / Finishes

 C3 Nickel Spazzolato / Brushed Nickel	 C8 Nickel Lucido / Polished Nickel	 C40 Oro / Gold	 C41 Oro spazzolato / Brushed Gold	 C50 Metal Black / Metal Black	 C51 Metal Black spazzolato / Brushed Metal Black	
 W1 Bianco Opaco Goffrato / Embossed Matt White	 N1 Nero Opaco Goffrato / Embossed Matt Black	 N6 Nero opaco / Matt black	 L5 Blu mediterraneo / Mediterranean blu	 P21 PVD brushed chocolate / PVD brushed chocolate	 P31 Brushed PVD British gold / Brushed PVD British gold	 P41 PVD Oro Spazzolato / PVD Brushed Gold
 P81 Brushed total black PVD / Brushed total black PVD	 P91 Brushed PVD Copper / Brushed PVD Copper					

HOOP

ZHO781

Disegno Complessivo / Overall Drawing



Note / Notes

Articolo non compatibile con bocca Z93768 e soffioni Z94218, Z94229 e Z94230.

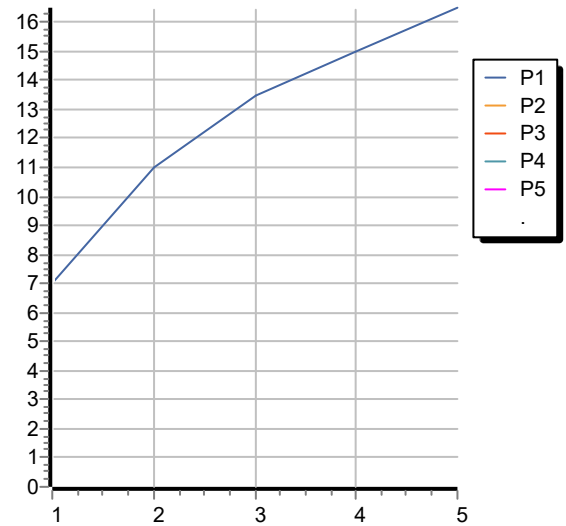
Item not compatible with spout code Z93768 and shower heads codes Z94218, Z94229, Z94230.

HOOP

ZHO781

Portate / Flowrates (lt/min)

PRESSIONE PRESSURE	1 BAR	2 BAR	3 BAR	4 BAR	5 BAR
1 RUBINETTO APERTO <i>P1</i>	7	11	13,5	15	16,5
<i>P2</i>					
<i>P3</i>					
<i>P4</i>					
<i>P5</i>					



HOOP

ZHO781

Pesi e Misure / Weights and Sizes

Peso (Kg) Weight (lb)	1,40 (Kg)	3,09 (lb)
Volume test (dc3) - (in3)	7,50 (dc3)	457,68 (in3)
h (mm) - (in)	90,00 (mm)	3,54 (in)
L1 (mm) - (in)	250,00 (mm)	9,84 (in)
L2 (mm) - (in)	333,00 (mm)	13,11 (in)

