

## GILL

ZGL676

Miscelatore monocomando incasso lavabo due fori. / 2 hole built-in single lever basin mixer.



Miscelatore monocomando incasso lavabo due fori con aeratore. Lunghezza bocca 220 mm.  
Water Saving - portata d'acqua uguale o inferiore a 6 l/min.

2 hole built-in single lever basin mixer with aerator. Spout projection 220 mm.  
Water Saving - water flow rate of 6 l/min or less.

R99499

Parte incasso. / Built-in part.



R99815

Parte incasso. / Built-in part.



Altre Finiture / Other Finishes : R99815

## Finiture / Finishes



Cromo / Chrome



C3  
Nickel Spazzolato / Brushed  
Nickel



C41  
Oro spazzolato / Brushed Gold

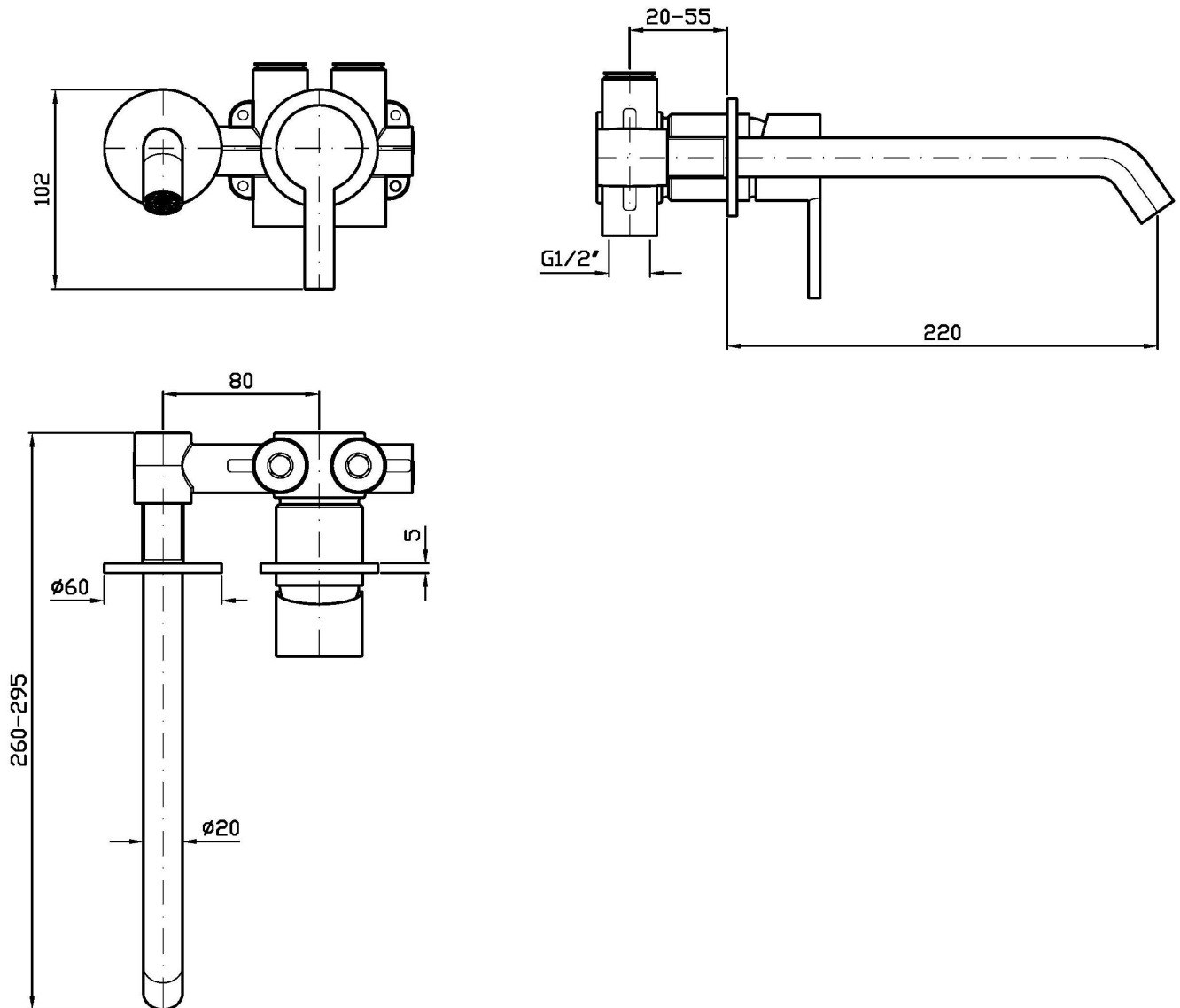


N1  
Nero Opaco Goffrato / Embossed  
Matt Black

## GILL

ZGL676

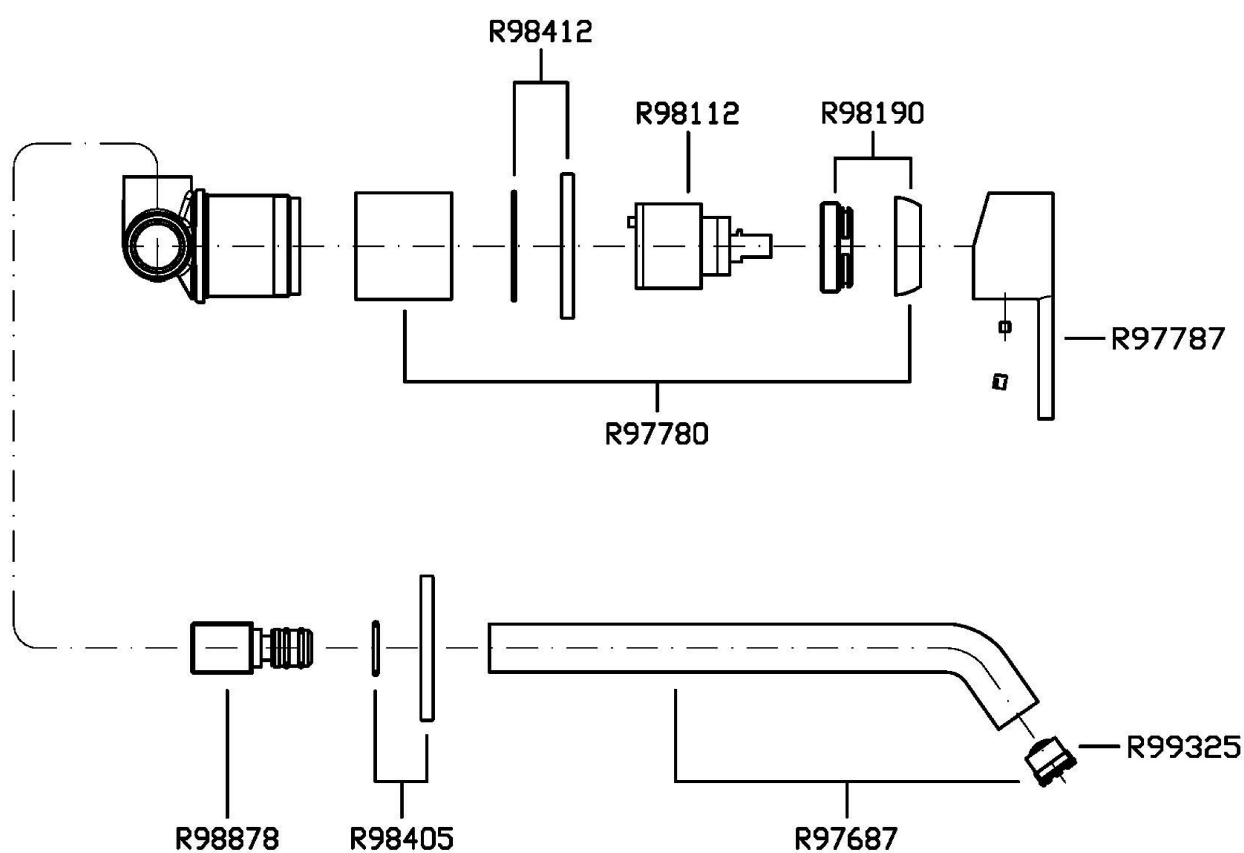
Disegno Complessivo / Overall Drawing



## GILL

ZGL676

Esplosi / Exploded

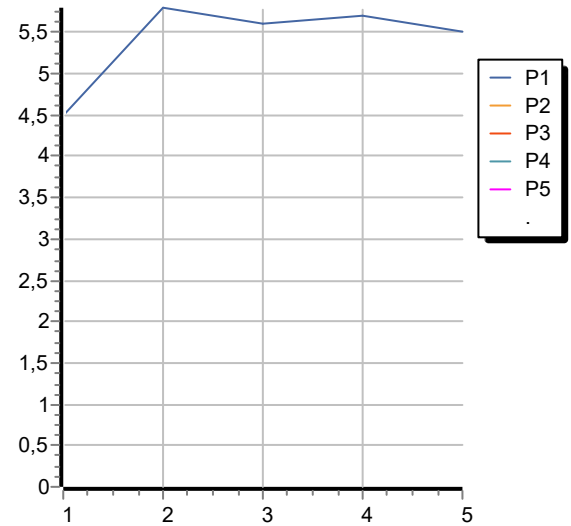


## GILL

ZGL676

Portate / Flowrates (lt/min)

| PRESSIONE<br>PRESSURE | 1 BAR | 2 BAR | 3 BAR | 4 BAR | 5 BAR |
|-----------------------|-------|-------|-------|-------|-------|
| LAVABO<br>BASIN       | 4,5   | 5,8   | 5,6   | 5,7   | 5,5   |
| P1                    |       |       |       |       |       |
| P2                    |       |       |       |       |       |
| P3                    |       |       |       |       |       |
| P4                    |       |       |       |       |       |
| P5                    |       |       |       |       |       |



## GILL

ZGL676

Pesi e Misure / Weights and Sizes

|                               |               |                |
|-------------------------------|---------------|----------------|
| Peso ( Kg ) Weight ( lb )     | 0,80 ( Kg )   | 1,76 ( lb )    |
| Volume test ( dc3 ) - ( in3 ) | 4,05 ( dc3 )  | 247,15 ( in3 ) |
| h ( mm ) - ( in )             | 70,00 ( mm )  | 2,76 ( in )    |
| L1 ( mm ) - ( in )            | 150,00 ( mm ) | 5,91 ( in )    |
| L2 ( mm ) - ( in )            | 385,00 ( mm ) | 15,16 ( in )   |

