

## SHOWER

ZD1777

Colonna doccia completa di termostatico esterno. / Shower column with exposed thermostatic mixer.



Colonna doccia completa di termostatico esterno, soffione Z94312 Ø 250 mm e doccetta in ottone Z94177 a getto fisso. Water Saving - portata d'acqua uguale o inferiore a 9 l/min.

Shower column with exposed thermostatic mixer, Ø 250 mm Z94312 shower head and brass handshower simple jet Z94177.

Water Saving - water flow rate of 9 l/min or less.

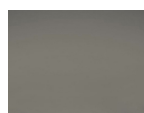
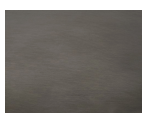
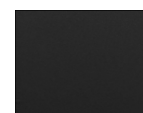
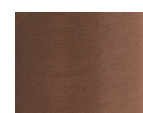
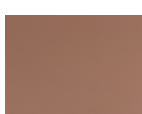
## SHOWER

ZD1777

### Finiture / Finishes



Croma / Chrome

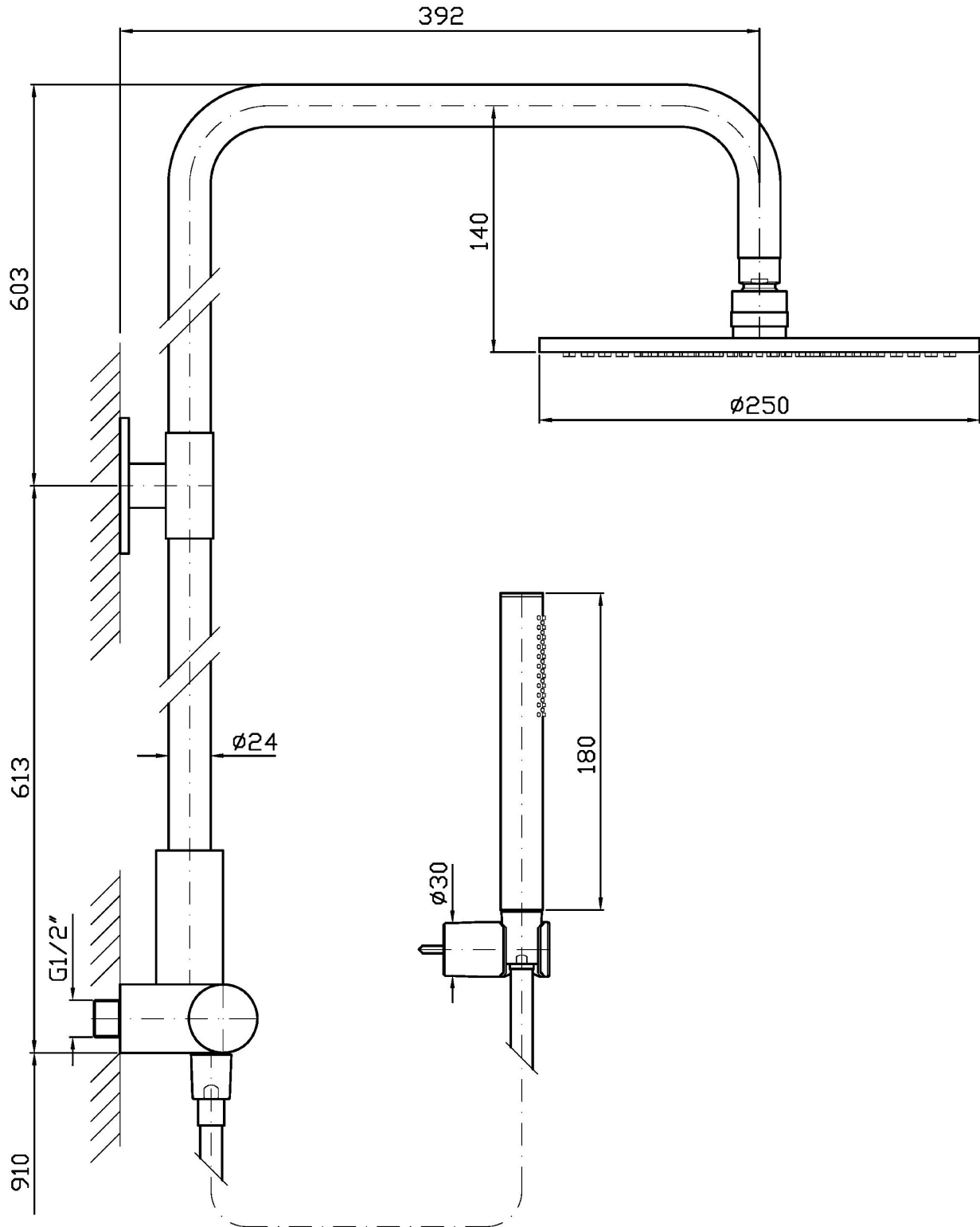
C3  
Nickel Spazzolato / Brushed  
NickelC8  
Nickel Lucido / Polished NickelC40  
Oro / GoldC41  
Oro spazzolato / Brushed  
GoldC50  
Metal Black / Metal BlackC51  
Metal Black spazzolato /  
Brushed Metal BlackW1  
Bianco Opaco Goffrato /  
Embossed Matt WhiteN1  
Nero Opaco Goffrato /  
Embossed Matt BlackN6  
Nero opaco / Matt blackP21  
PVD brushed chocolate / PVD  
brushed chocolateP31  
Brushed PVD British gold /  
Brushed PVD British goldP41  
PVD Oro Spazzolato / PVD  
Brushed GoldP81  
Brushed total black PVD /  
Brushed total black PVDP91  
Brushed PVD Copper /  
Brushed PVD CopperJ3  
Glossy gesso / Glossy gessoK7  
Pearl cipria / Pearl cipriaR6  
Pearl chili / Pearl chiliV7  
Pearl salvia / Pearl salviaV8  
Matt mirto / Matt mirto

### Note / Notes

## SHOWER

ZD1777

Disegno Complessivo / Overall Drawing

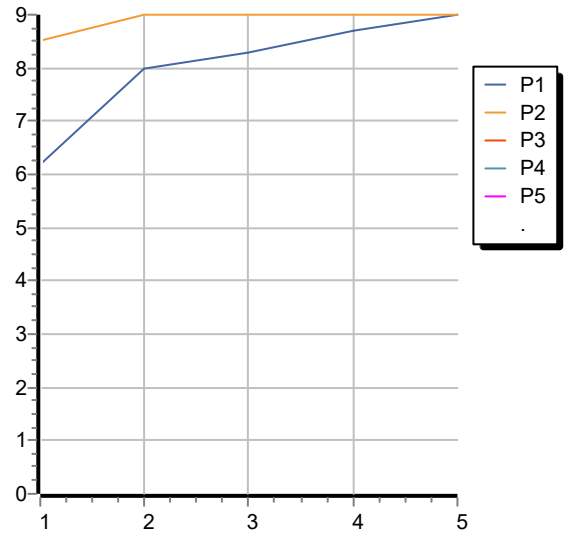


## SHOWER

ZD1777

Portate / Flowrates (lt/min)

PRESSIONE PRESSURE	1 BAR	2 BAR	3 BAR	4 BAR	5 BAR
P1 SOFFIONE SHOWER HEAD	8,5	9	9	9	9
P2 DOCCETTA HANDSHOWER	6,2	8	8,3	8,7	9
P3					
P4					
P5					



## SHOWER

ZD1777

Pesi e Misure / Weights and Sizes

Peso ( Kg ) Weight ( lb )	8,50 ( Kg )	18,74 ( lb )
Volume test ( dc3 ) - ( in3 )	53,39 ( dc3 )	3258,06 ( in3 )
h ( mm ) - ( in )	215,00 ( mm )	8,46 ( in )
L1 ( mm ) - ( in )	260,00 ( mm )	10,24 ( in )
L2 ( mm ) - ( in )	955,00 ( mm )	37,60 ( in )

