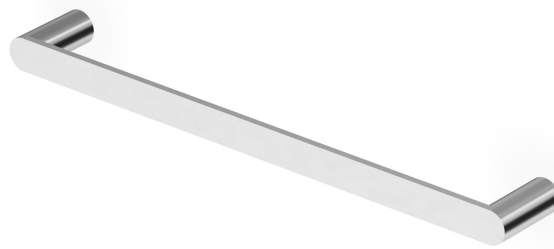


ISY22

ZAF121.X

Porta salviette. / Towel holder.



Porta salviette in acciaio inox AISI 316L, lunghezza 45 cm.

Towel holder in AISI 316L stainless steel, length 45 cm.

ISY22

ZAF121.X

Finiture / Finishes



X

Acciaio inox spazzolato /
Brushed stainless steel



XP21

Brushed PVD chocolate /
Brushed PVD chocolate



XP31

Brushed PVD British gold /
Brushed PVD British gold



XP41

Brushed PVD gold / Brushed
PVD gold



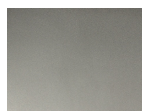
XP81

PVD Brushed Total Black /
PVD Brushed Total Black



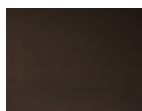
XP91

Brushed PVD copper /
Brushed PVD copper



XS

Acciaio inox matt / Matt
stainless steel



XSP21

Matt PVD chocolate / Matt
PVD chocolate



XSP31

Matt PVD British gold / Matt
PVD British gold



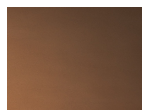
XSP41

Matt PVD gold / Matt PVD gold



XSP81

Matt PVD total black / Matt
PVD total black



XSP91

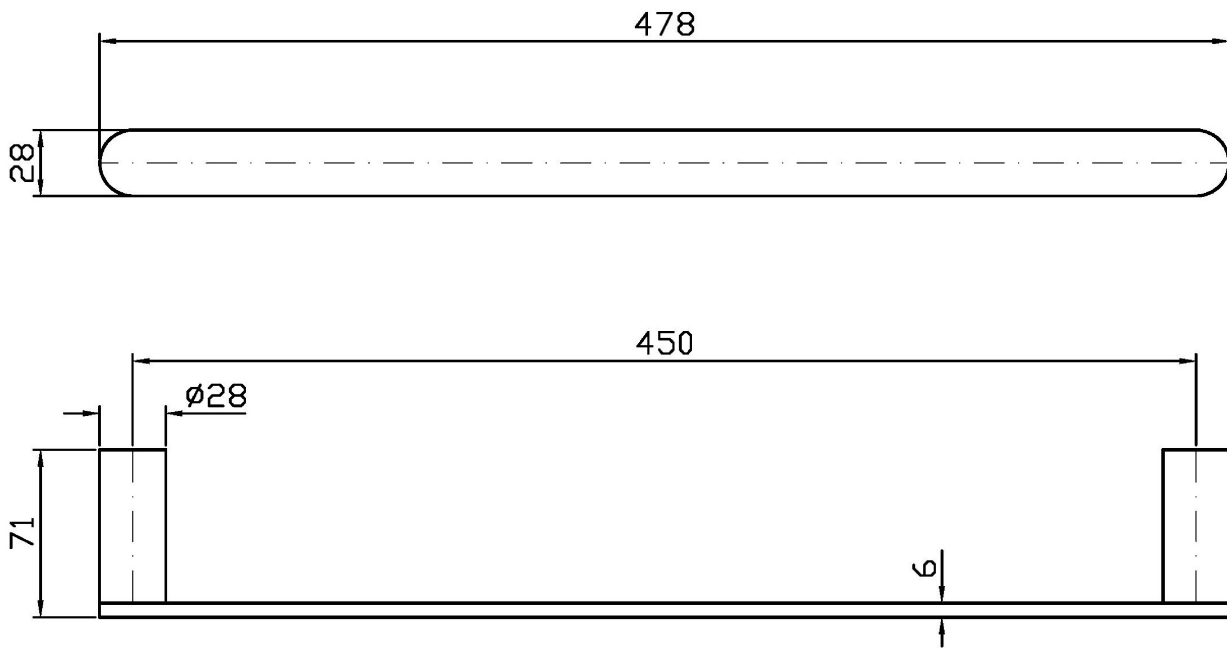
Matt PVD copper / Matt PVD
copper

Note / Notes

ISY22

ZAF121.X

Disegno Complessivo / Overall Drawing



ISY22

ZAF121.X

Pesi e Misure / Weights and Sizes

Peso (Kg) Weight (lb)	1,00 (Kg)	2,20 (lb)
Volume test (dc3) - (in3)	3,61 (dc3)	220,30 (in3)
h (mm) - (in)	55,00 (mm)	2,17 (in)
L1 (mm) - (in)	100,00 (mm)	3,94 (in)
L2 (mm) - (in)	655,00 (mm)	25,79 (in)

