

## MEDAMEDA

ZAD915





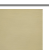




Dispenser a muro. / Wall mounted soap dispenser.



Dispenser a muro con contenitore in ceramica bianca opaca.

Matt white ceramic wall mounted soap dispenser.

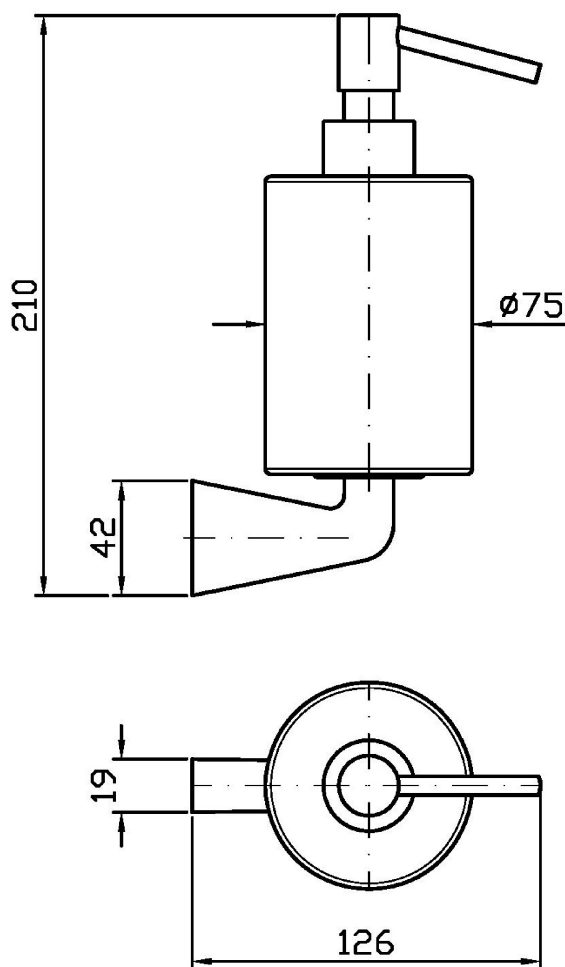
### Finiture / Finishes

 Croma / Chrome	 C3 Nickel Spazzolato / Brushed Nickel	 C8 Nickel Lucido / Polished Nickel	 C40 Oro / Gold	 C41 Oro spazzolato / Brushed Gold	 C50 Metal Black / Metal Black	 C51 Metal Black spazzolato / Brushed Metal Black
 N1 Nero Opaco Goffrato / Embossed Matt Black	 P31 Brushed PVD British gold / Brushed PVD British gold	 P81 Brushed total black PVD / Brushed total black PVD				

## MEDAMEDA

ZAD915

Disegno Complessivo / Overall Drawing



Note / Notes

## MEDAMEDA

### ZAD915 Pesì e Misure / Weights and Sizes

Peso ( Kg ) Weight ( lb )	1,51 ( Kg )	3,33 ( lb )
Volume test ( dc3 ) - ( in3 )	3,32 ( dc3 )	202,60 ( in3 )
h ( mm ) - ( in )	93,00 ( mm )	3,66 ( in )
L1 ( mm ) - ( in )	162,00 ( mm )	6,38 ( in )
L2 ( mm ) - ( in )	220,00 ( mm )	8,66 ( in )

