

MEDAMEDA

ZAD913





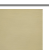




Porta bicchiere a muro. / Wall tumbler holder.



Porta bicchiere a muro, con bicchiere in ceramica bianca opaca.

Matt white ceramic wall tumbler holder.

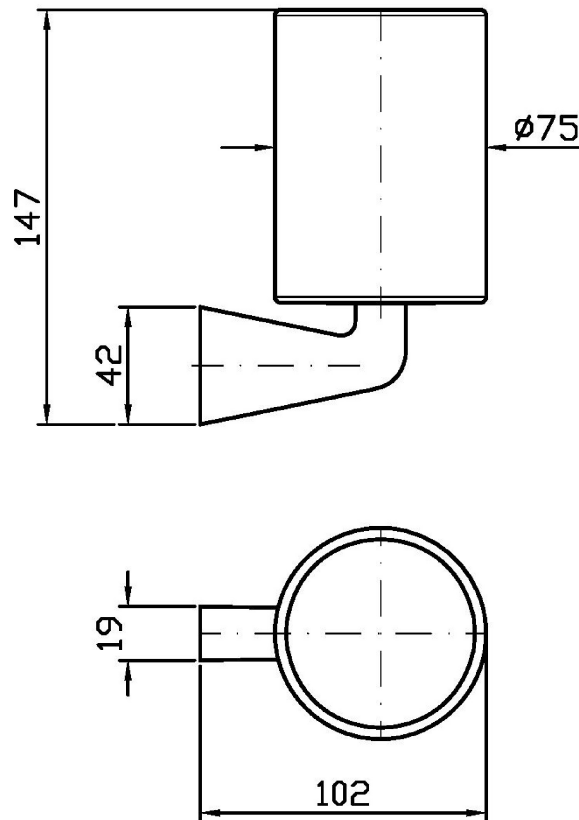
Finiture / Finishes

 Croma / Chrome	 C3 Nickel Spazzolato / Brushed Nickel	 C8 Nickel Lucido / Polished Nickel	 C40 Oro / Gold	 C41 Oro spazzolato / Brushed Gold	 C50 Metal Black / Metal Black	 C51 Metal Black spazzolato / Brushed Metal Black
 N1 Nero Opaco Goffrato / Embossed Matt Black	 P31 Brushed PVD British gold / Brushed PVD British gold	 P81 Brushed total black PVD / Brushed total black PVD				

MEDAMEDA

ZAD913

Disegno Complessivo / Overall Drawing



Note / Notes

MEDAMEDA

ZAD913 Pesì e Misure / Weights and Sizes

Peso (Kg) Weight (lb)	0,78 (Kg)	1,72 (lb)
Volume test (dc3) - (in3)	3,32 (dc3)	202,60 (in3)
h (mm) - (in)	93,00 (mm)	3,66 (in)
L1 (mm) - (in)	162,00 (mm)	6,38 (in)
L2 (mm) - (in)	220,00 (mm)	8,66 (in)

