

## OCTO X

Z94637.X

Deviatore a 2/3 vie. / 2/3 way diverter.



Deviatore a 2 o 3 vie in acciaio inox AISI 316L, senza apertura/chiusura acqua, uscite da 1/2".  
Da abbinare ad un miscelatore monocomando incasso doccia.

2 or 3 way diverter in AISI 316L stainless steel, without water on/off function, 1/2" outlets.  
To be combined to a built-in single lever shower mixer.

R96737

Parte incasso deviatore 2 vie. / Built-in part - 2 way diverter.



R96738

Parte incasso deviatore 3 vie. / Built-in part - 3 way diverter.



## OCTO X

Z94637.X

### Finiture / Finishes



**X**

Acciaio inox spazzolato /  
Brushed stainless steel



**XP21**

Brushed PVD chocolate /  
Brushed PVD chocolate



**XP31**

Brushed PVD British gold /  
Brushed PVD British gold



**XP41**

Brushed PVD gold / Brushed  
PVD gold



**XP81**

PVD Brushed Total Black /  
PVD Brushed Total Black



**XP91**

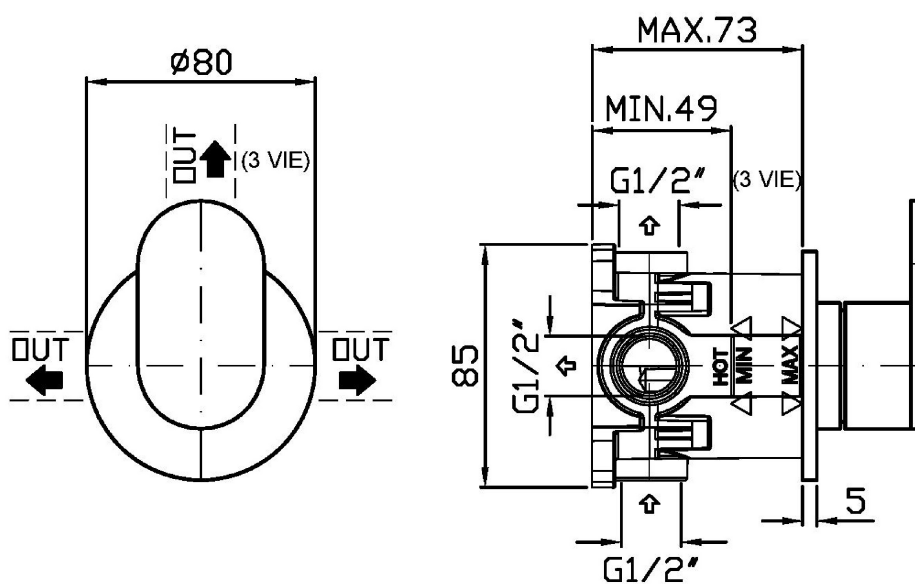
Brushed PVD copper /  
Brushed PVD copper

### Note / Notes

## OCTO X

Z94637.X

Disegno Complessivo / Overall Drawing

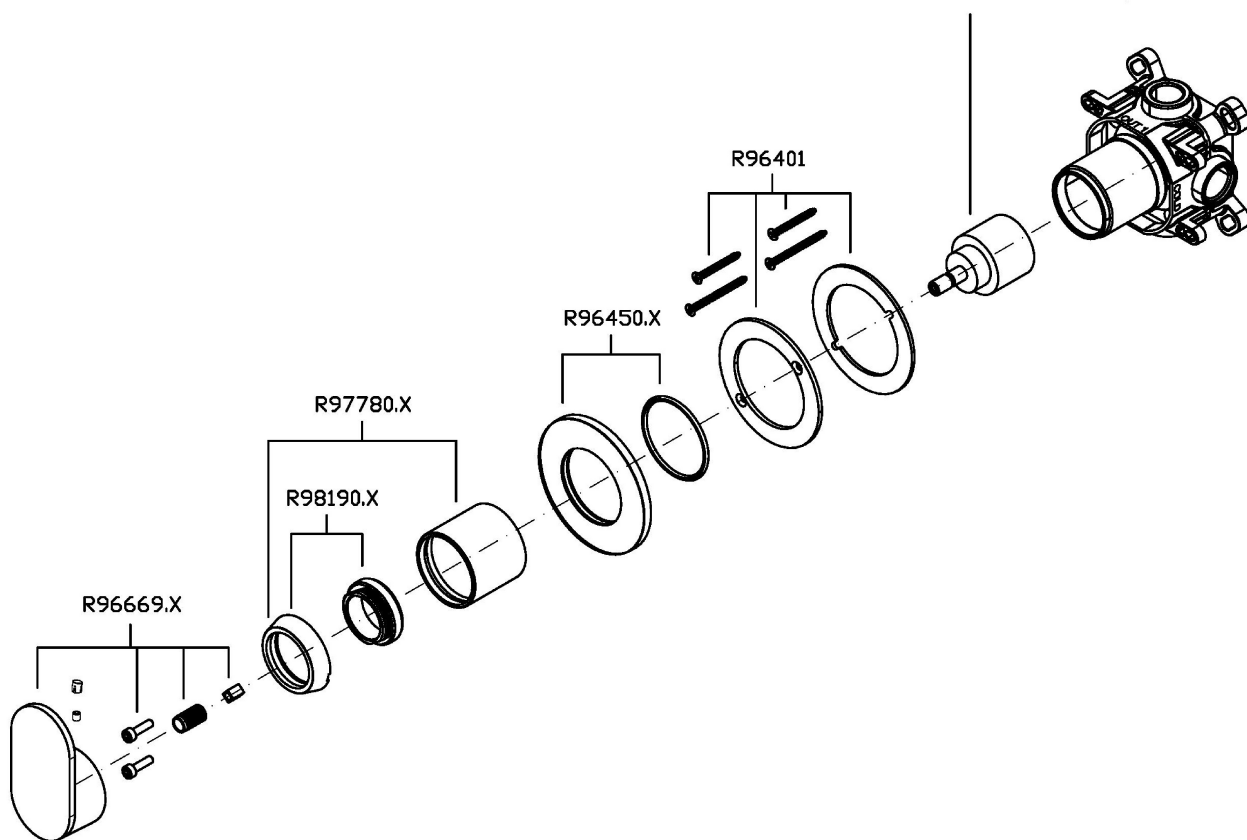


## OCTO X

Z94637.X

Esplosi / Exploded

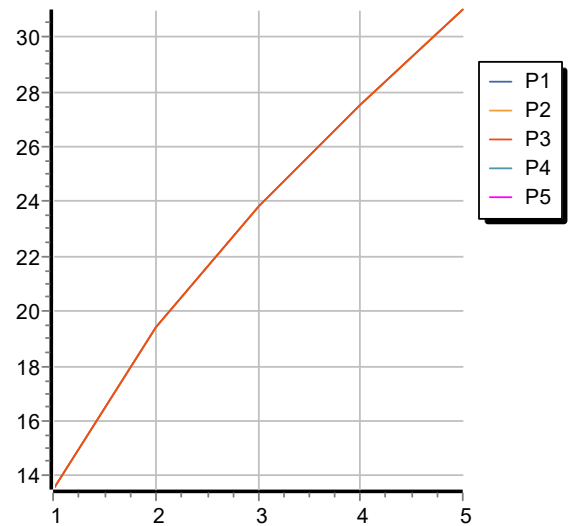
R97424: PER DEVIATORE A 2 VIE R96737 (2 way diverter R96737)  
R96585: PER DEVIATORE A 3 VIE R96738 (3 way diverter R96738)



## OCTO X

### Z94637.X Portate / Flowrates (lt/min)

PRESSIONE PRESSURE	1 BAR	2 BAR	3 BAR	4 BAR	5 BAR
P1 DEV. USCITA 1 DIV. OUTLET 1	13,5	19,4	23,8	27,5	31
P2 DEV. USCITA 2 DIV. OUTLET 2	13,5	19,4	23,8	27,5	31
P3 DEV. USCITA 3 DIV. OUTLET 3	13,5	19,4	23,8	27,5	31
P4					
P5					



## OCTO X

### Z94637.X Pesi e Misure / Weights and Sizes

Peso ( Kg ) Weight ( lb )	0,60 ( Kg )	1,32 ( lb )
Volume test ( dc3 ) - ( in3 )	1,21 ( dc3 )	73,84 ( in3 )
h ( mm ) - ( in )	73,00 ( mm )	2,87 ( in )
L1 ( mm ) - ( in )	127,00 ( mm )	5,00 ( in )
L2 ( mm ) - ( in )	130,00 ( mm )	5,12 ( in )

