

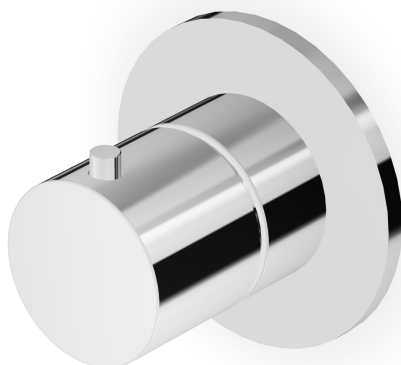
Marchio / Brand ZUCCHETTI

Classe / Class LAB

GILL

Z94630

Deviatore a 2 vie. / 2 way diverter.



Deviatore a 2 vie senza apertura/chiusura acqua, uscite da 1/2".
Da abbinare ad un miscelatore monocomando incasso doccia.

2 way diverter without water on/off function, 1/2" outlets.
To be combined to a built-in single lever shower mixer.

R96737

Parte incasso deviatore 2 vie. / Built-in part - 2
way diverter.



GILL

Z94630

Finiture / Finishes

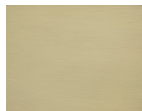


Cromo / Chrome



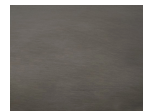
C3

Nickel Spazzolato / Brushed
Nickel



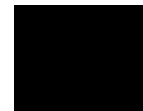
C41

Oro spazzolato / Brushed
Gold



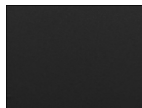
C51

Metal Black spazzolato /
Brushed Metal Black



N1

Nero Opaco Goffrato /
Embossed Matt Black



N6

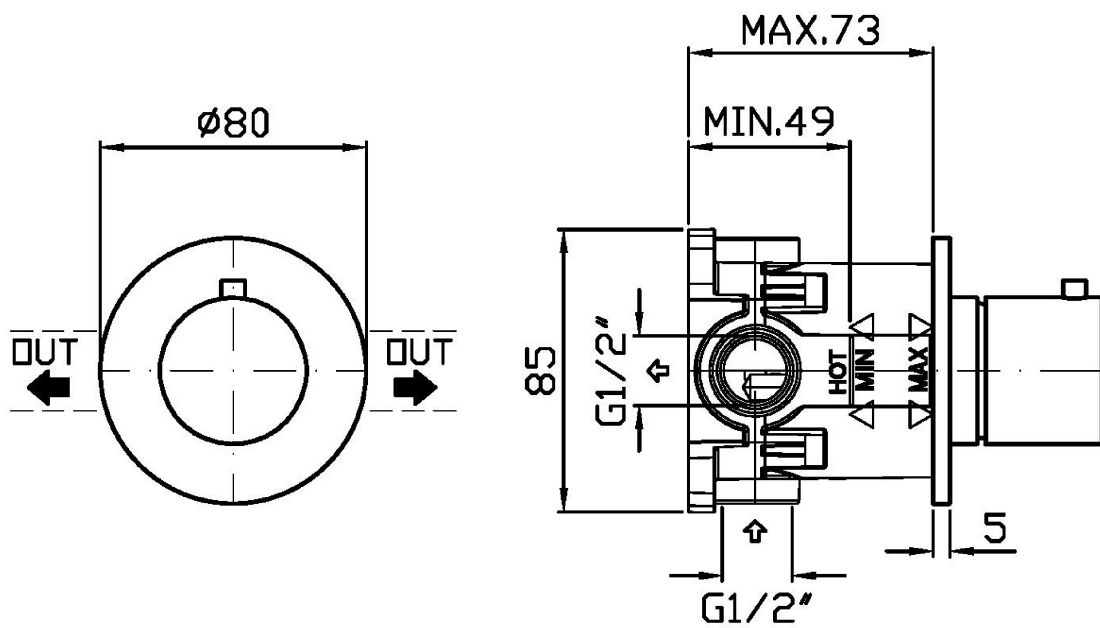
Nero opaco / Matt black

Note / Notes

GILL

Z94630

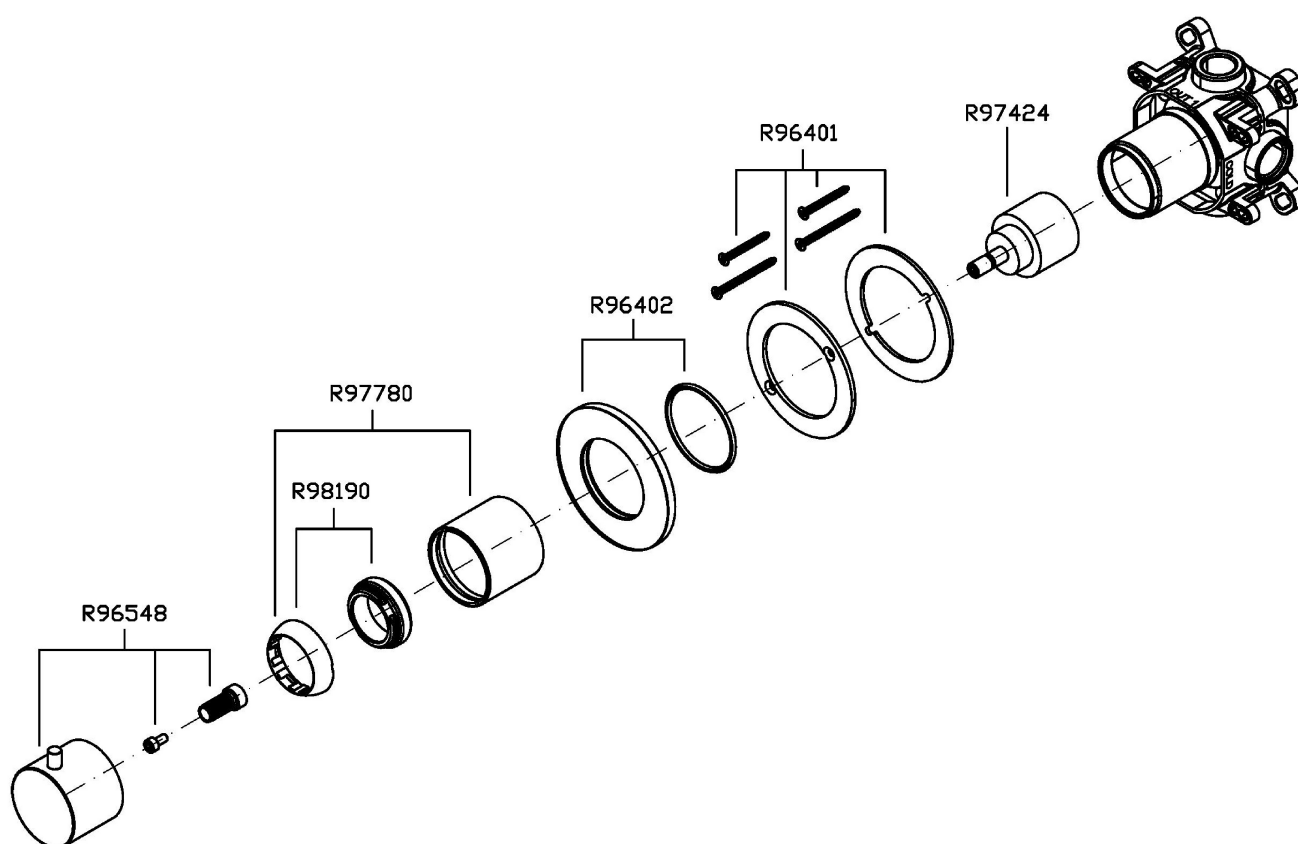
Disegno Complessivo / Overall Drawing



GILL

Z94630

Esplosi / Exploded

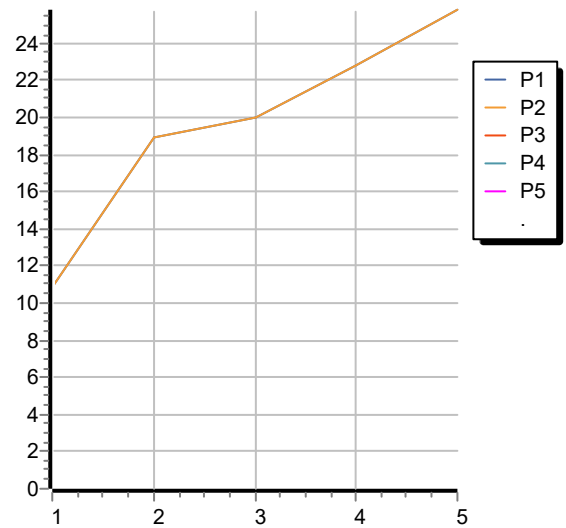


GILL

Z94630

Portate / Flowrates (lt/min)

PRESSIONE PRESSURE	1 BAR	2 BAR	3 BAR	4 BAR	5 BAR
P1 DEV. USCITA 1 DIV. OUTLET 1	10,9	18,9	20	22,8	25,8
P2 DEV. USCITA 2 DIV. OUTLET 2	10,9	18,9	20	22,8	25,8
P3					
P4					
P5					



GILL

Z94630

Pesi e Misure / Weights and Sizes

Peso (Kg) Weight (lb)	0,55 (Kg)	1,21 (lb)
Volume test (dc3) - (in3)	0,91 (dc3)	55,53 (in3)
h (mm) - (in)	66,00 (mm)	2,60 (in)
L1 (mm) - (in)	111,00 (mm)	4,37 (in)
L2 (mm) - (in)	123,00 (mm)	4,84 (in)

