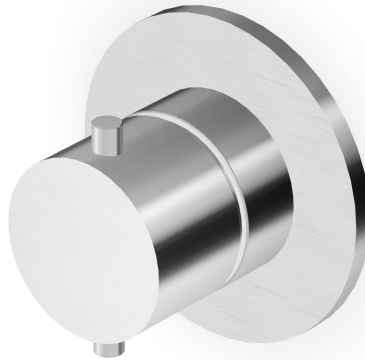


## HELM

Z94622.X

Deviatore a 3 vie. / 3 way diverter.



Deviatore a 3 vie in acciaio inox AISI 316L, senza apertura/chiusura acqua, uscite da 1/2".  
Da abbinare ad un miscelatore monocomando incasso doccia.

3 way diverter in AISI 316L stainless steel, without water on/off function, 1/2" outlets.  
To be combined to a built-in single lever shower mixer.

R96738

Parte incasso deviatore 3 vie. / Built-in part - 3  
way diverter.



## HELM

Z94622.X

### Finiture / Finishes



**X**

Acciaio inox spazzolato /  
Brushed stainless steel



**XP21**

Brushed PVD chocolate /  
Brushed PVD chocolate



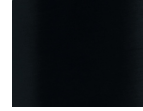
**XP31**

Brushed PVD British gold /  
Brushed PVD British gold



**XP41**

Brushed PVD gold / Brushed  
PVD gold



**XP81**

PVD Brushed Total Black /  
PVD Brushed Total Black



**XP91**

Brushed PVD copper /  
Brushed PVD copper

### Note / Notes

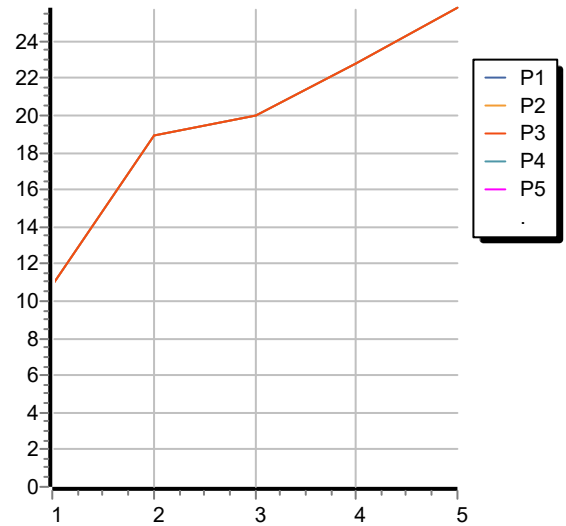


## HELM

Z94622.X

Portate / Flowrates (lt/min)

PRESSIONE PRESSURE	1 BAR	2 BAR	3 BAR	4 BAR	5 BAR
P1 DEV. USCITA 1 DIV. OUTLET 1	10,9	18,9	20	22,8	25,8
P2 DEV. USCITA 2 DIV. OUTLET 2	10,9	18,9	20	22,8	25,8
P3 DEV. USCITA 3 DIV. OUTLET 3	10,9	18,9	20	22,8	25,8
P4					
P5					



## HELM

Z94622.X

Pesi e Misure / Weights and Sizes

Peso ( Kg ) Weight ( lb )	0,55 ( Kg )	1,21 ( lb )
Volume test ( dc3 ) - ( in3 )	0,91 ( dc3 )	55,53 ( in3 )
h ( mm ) - ( in )	66,00 ( mm )	2,60 ( in )
L1 ( mm ) - ( in )	111,00 ( mm )	4,37 ( in )
L2 ( mm ) - ( in )	123,00 ( mm )	4,84 ( in )

