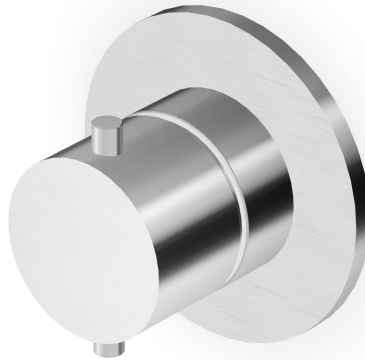


HELM

Z94621.X

Deviatore a 2 vie. / 2 way diverter.



Deviatore a 2 vie in acciaio inox AISI 316L, senza apertura/chiusura acqua, uscite da 1/2".
Da abbinare ad un miscelatore monocomando incasso doccia.

2 way diverter in AISI 316L stainless steel, without water on/off function, 1/2" outlets.
To be combined to a built-in single lever shower mixer.

R96737

Parte incasso deviatore 2 vie. / Built-in part - 2
way diverter.



HELM

Z94621.X

Finiture / Finishes



X

Acciaio inox spazzolato /
Brushed stainless steel



XP21

Brushed PVD chocolate /
Brushed PVD chocolate



XP31

Brushed PVD British gold /
Brushed PVD British gold



XP41

Brushed PVD gold / Brushed
PVD gold



XP81

PVD Brushed Total Black /
PVD Brushed Total Black



XP91

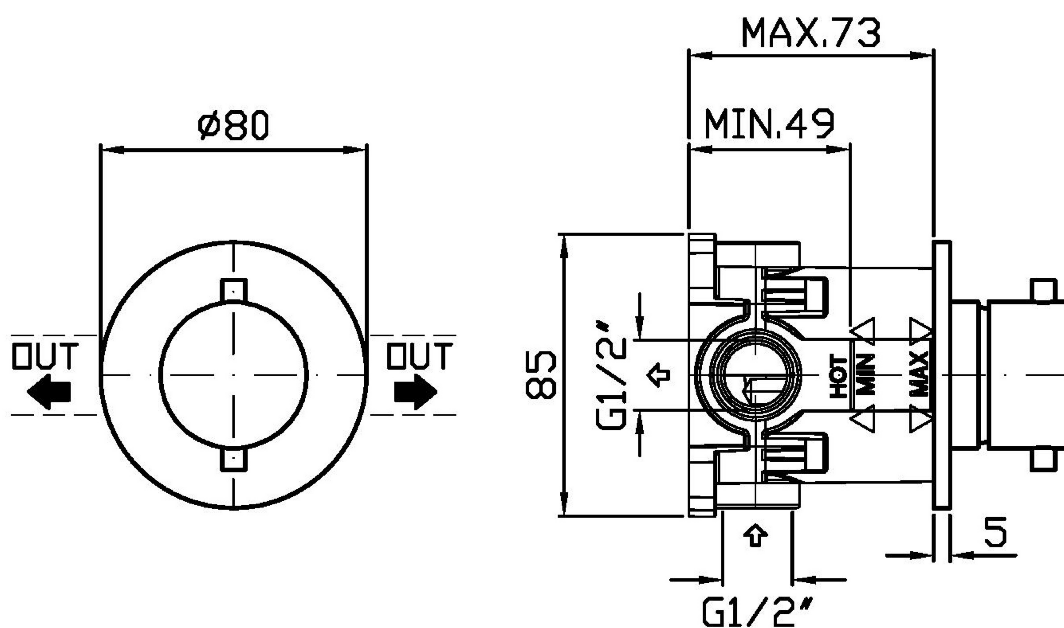
Brushed PVD copper /
Brushed PVD copper

Note / Notes

HELM

Z94621.X

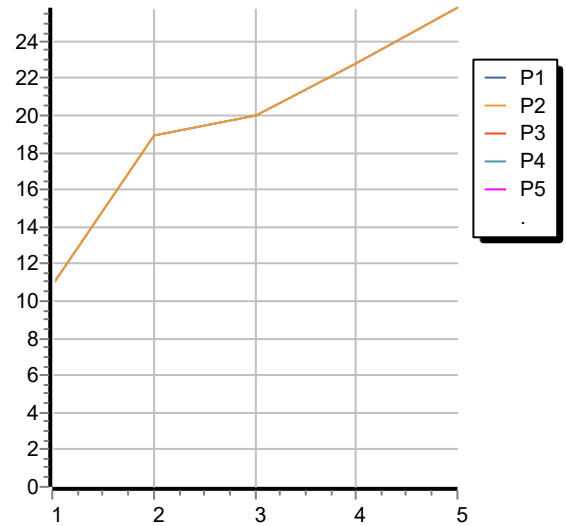
Disegno Complessivo / Overall Drawing



HELM

Z94621.X Portate / Flowrates (lt/min)

PRESSIONE PRESSURE	1 BAR	2 BAR	3 BAR	4 BAR	5 BAR
P1 DEV. USCITA 1 DIV. OUTLET 1	10,9	18,9	20	22,8	25,8
P2 DEV. USCITA 2 DIV. OUTLET 2	10,9	18,9	20	22,8	25,8
P3					
P4					
P5					



HELM

Z94621.X Pesi e Misure / Weights and Sizes

Peso (Kg) Weight (lb)	0,55 (Kg)	1,21 (lb)
Volume test (dc3) - (in3)	0,91 (dc3)	55,53 (in3)
h (mm) - (in)	66,00 (mm)	2,60 (in)
L1 (mm) - (in)	111,00 (mm)	4,37 (in)
L2 (mm) - (in)	123,00 (mm)	4,84 (in)

