

SHOWER

Z94313

Soffione 250x250 mm a getto fisso. / 250x250 mm shower head, simple jet.



Soffione 250x250 mm in ottone, a getto fisso, con sistema anticalcare. Spessore 8 mm. Ispezionabile.
Water Saving - portata d'acqua uguale o inferiore a 9 l/min.

250x250 mm brass shower head simple jet, with anti-limescale system. 8 mm thickness. Inspectionable.
Water Saving - water flow rate of 9 l/min or less.

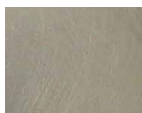
SHOWER

Z94313

Finiture / Finishes



Croma / Chrome



Nickel Spazzolato / Brushed Nickel

C3



Nickel Lucido / Polished Nickel

C8



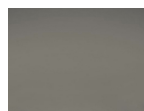
Oro / Gold

C40



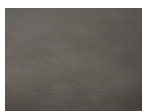
Oro spazzolato / Brushed Gold

C41



Metal Black / Metal Black

C50



Metal Black spazzolato / Brushed Metal Black

C51



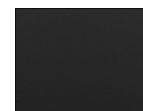
Bianco Opaco Goffrato / Embossed Matt White

W1



Nero Opaco Goffrato / Embossed Matt Black

N1



Nero opaco / Matt black

N6



PVD brushed chocolate / PVD brushed chocolate

P21



Brushed PVD British gold / Brushed PVD British gold

P31



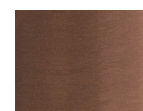
PVD Oro Spazzolato / PVD Brushed Gold

P41



Brushed total black PVD / Brushed total black PVD

P81



Brushed PVD Copper / Brushed PVD Copper

P91



Glossy gesso / Glossy gesso

J3



Pearl cipria / Pearl cipria

K7



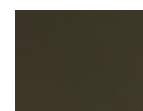
Pearl chili / Pearl chili

R6



Pearl salvia / Pearl salvia

V7



Matt mirto / Matt mirto

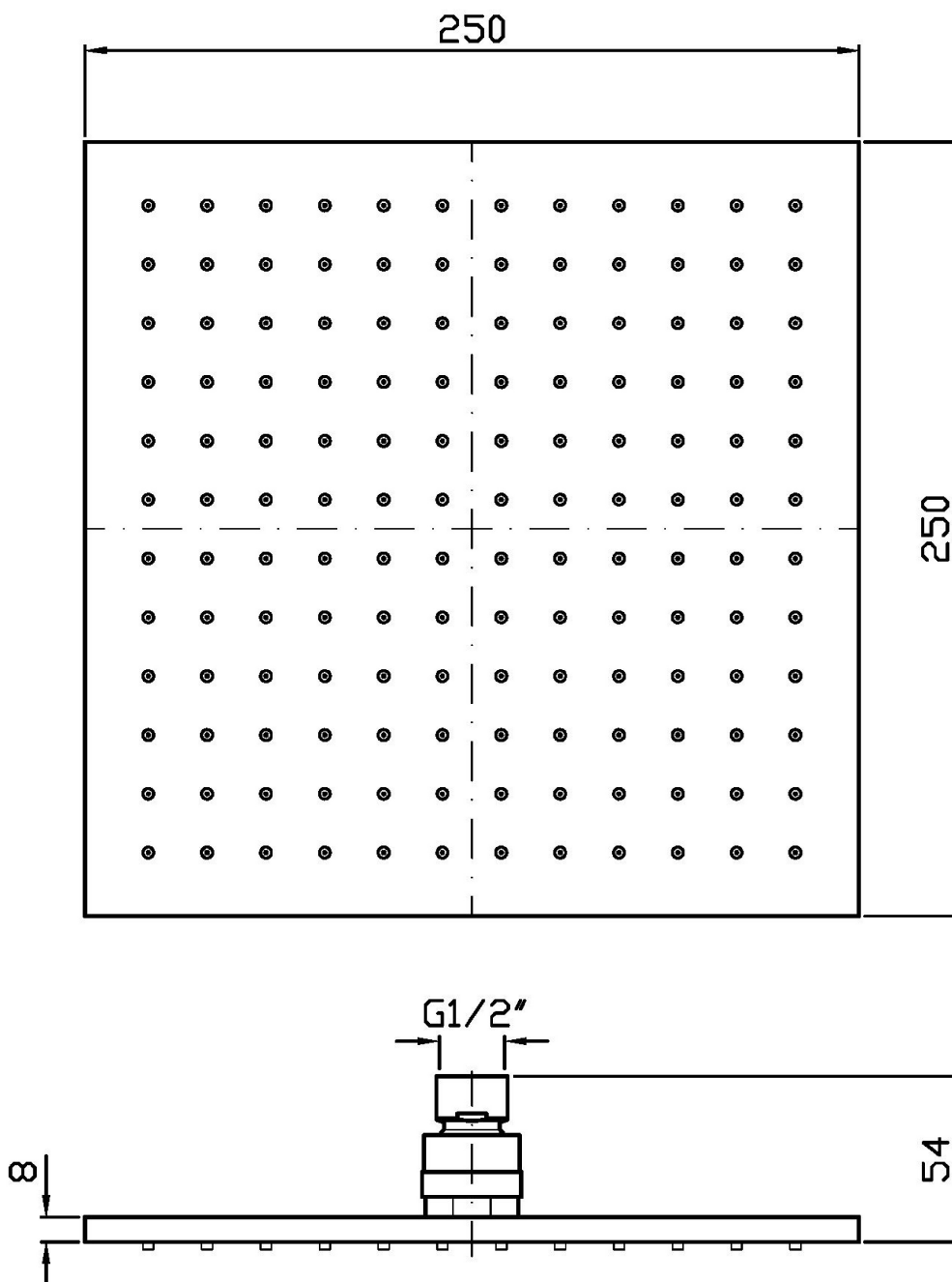
V8

Note / Notes

SHOWER

Z94313

Disegno Complessivo / Overall Drawing

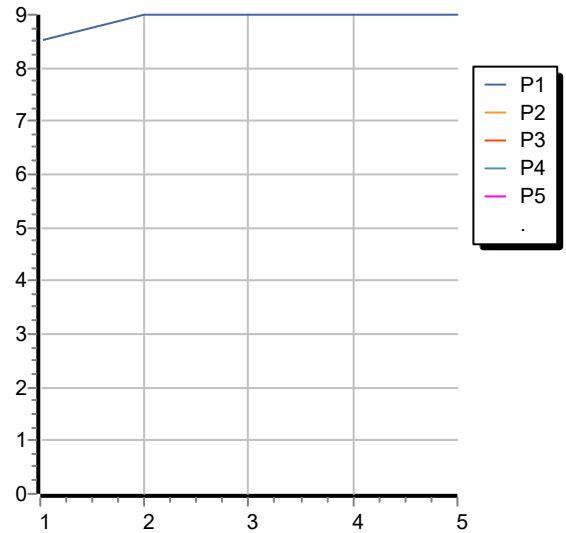


SHOWER

Z94313

Portate / Flowrates (lt/min)

PRESSIONE PRESSURE	1 BAR	2 BAR	3 BAR	4 BAR	5 BAR
P1 SOFFIONE SHOWER HEAD	8,5	9	9	9	9
P2					
P3					
P4					
P5					



SHOWER

Z94313

Pesi e Misure / Weights and Sizes

Peso (Kg) Weight (lb)	1,34 (Kg)	2,95 (lb)
Volume test (dc3) - (in3)	5,19 (dc3)	316,96 (in3)
h (mm) - (in)	70,00 (mm)	2,76 (in)
L1 (mm) - (in)	265,00 (mm)	10,43 (in)
L2 (mm) - (in)	280,00 (mm)	11,02 (in)

