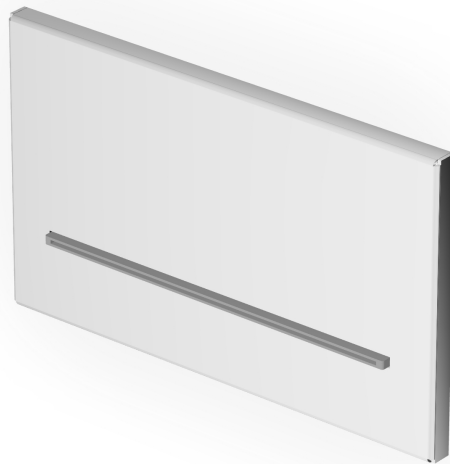


## SHOWER

Z94294

Bocca a cascata. / Blade flow spout.



Bocca di erogazione a cascata in acciaio inox.

Blade flow spout stainless steel.

## SHOWER

Z94294

### Finiture / Finishes



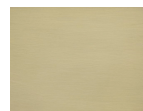
Cromo / Chrome



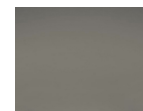
Nickel Lucido / Polished Nickel



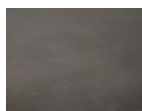
Oro / Gold



Oro spazzolato / Brushed Gold



Metal Black / Metal Black



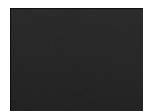
Metal Black spazzolato /  
Brushed Metal Black



Bianco Opaco Goffrato /  
Embossed Matt White



Nero Opaco Goffrato /  
Embossed Matt Black



Nero opaco / Matt black



Blu mediterraneo /  
Mediterranean blu



Acciaio inox spazzolato /  
Brushed stainless steel



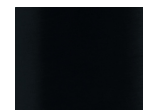
Brushed PVD chocolate /  
Brushed PVD chocolate



Brushed PVD British gold /  
Brushed PVD British gold



Brushed PVD gold / Brushed  
PVD gold



PVD Brushed Total Black /  
PVD Brushed Total Black



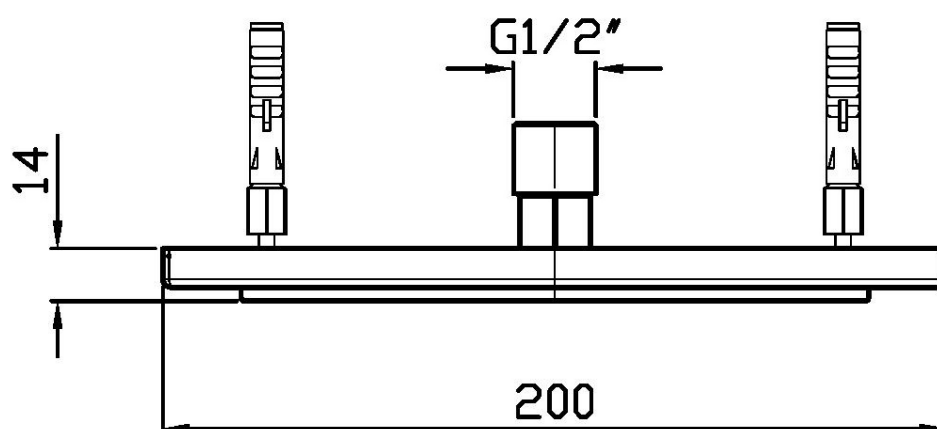
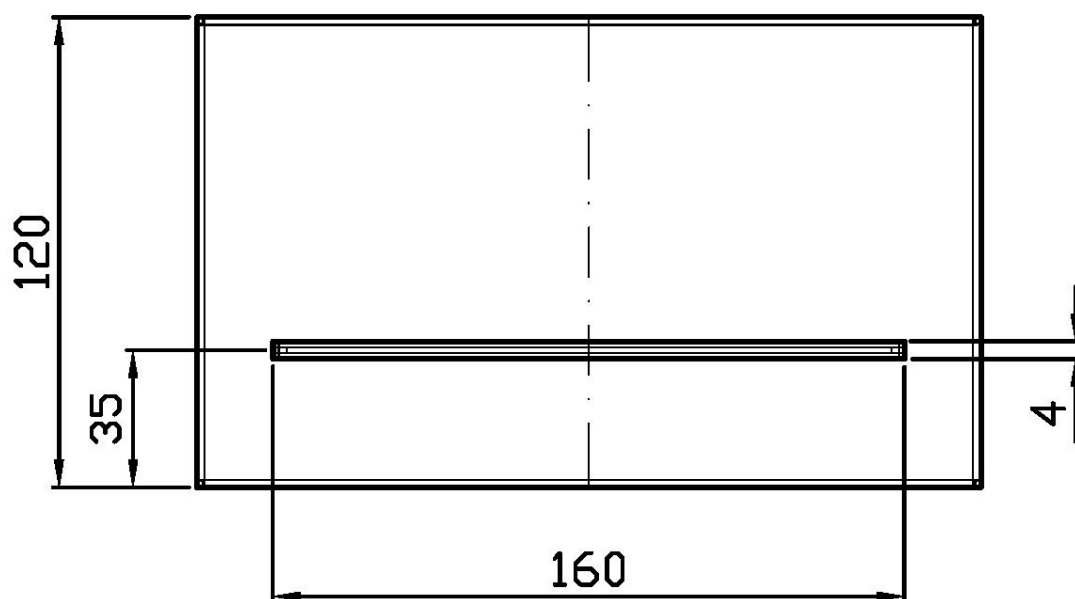
Brushed PVD copper /  
Brushed PVD copper

### Note / Notes

## SHOWER

Z94294

Disegno Complessivo / Overall Drawing

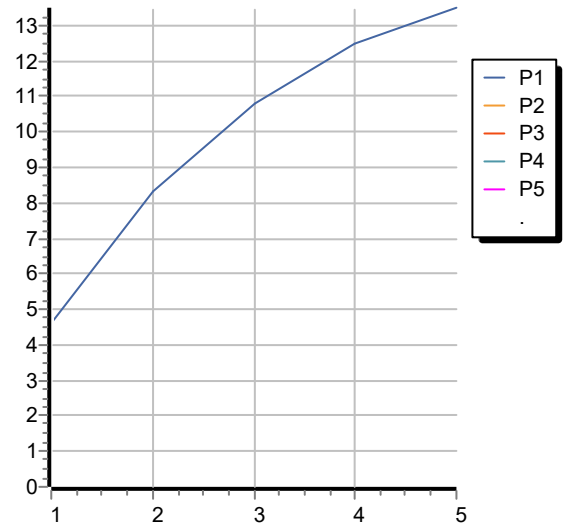


## SHOWER

Z94294

Portate / Flowrates (lt/min)

PRESSIONE PRESSURE	1 BAR	2 BAR	3 BAR	4 BAR	5 BAR
GETTO LAMA BLADE FLOW <i>P1</i>	4,6	8,3	10,8	12,5	13,5
<i>P2</i>					
<i>P3</i>					
<i>P4</i>					
<i>P5</i>					



## SHOWER

Z94294

Pesi e Misure / Weights and Sizes

Peso ( Kg ) Weight ( lb )	1,10 ( Kg )	2,43 ( lb )
Volume test ( dc3 ) - ( in3 )	5,00 ( dc3 )	305,12 ( in3 )
h ( mm ) - ( in )	70,00 ( mm )	2,76 ( in )
L1 ( mm ) - ( in )	250,00 ( mm )	9,84 ( in )
L2 ( mm ) - ( in )	285,00 ( mm )	11,22 ( in )

