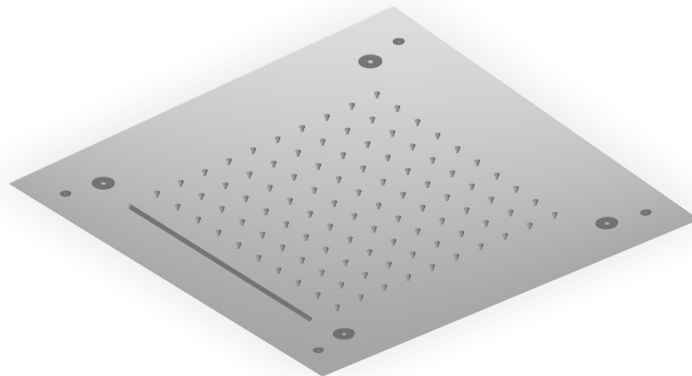


SHOWER

Z94293

Soffione doccia multifunzione 430x430 mm a soffitto. / 430x430 mm ceiling mounted multifunction shower head.



Soffione doccia multifunzione 430x430 mm in acciaio inox a soffitto.

Getti: pioggia, lama e nebulizzato. Necessita di abbinamento con 3 rubinetti d'arresto.

Portata minima richiesta: getto pioggia 9 lt. / min. getto lama 8 lt. / min. getto nebulizzato 7 lt. / min.

Nelle versioni verniciate, lame, nebulizzatori e viti rimangono in finitura cromo/acciaio.


430x430 mm ceiling mounted stainless steel multifunction shower head.

Jets: rain, blade and atomising (spray). To be combined with 3 built-in stop valves to select the jets.

Minimum flowrate requested: rain jet 9 lt. / min. blade jet 8 lt. / min. atomizing jet 7 lt. / min.

In the painted versions, blades, prayers and screws remain in chrome/steel finish.

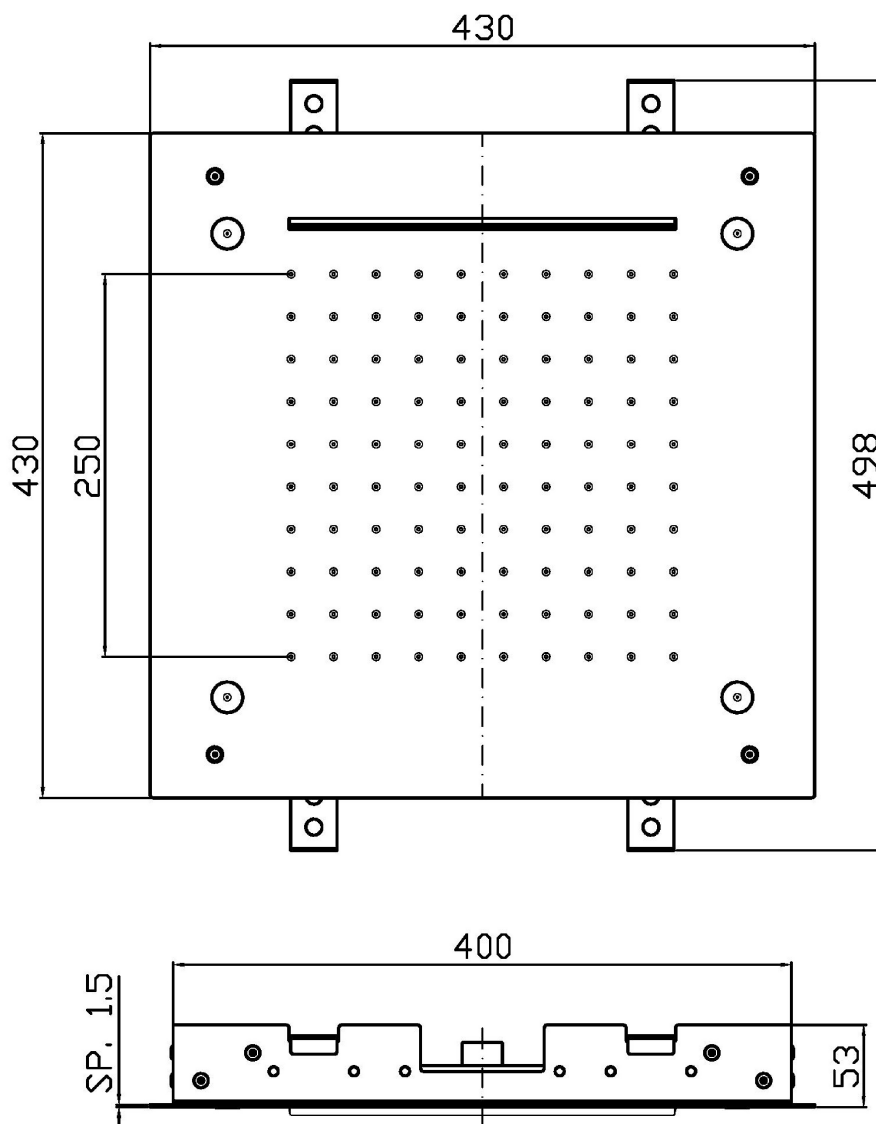
Finiture / Finishes

	 C8	 C40	 C41	 C50	 C51	 W1
Cromo / Chrome	Nickel Lucido / Polished Nickel	Oro / Gold	Oro spazzolato / Brushed Gold	Metal Black / Metal Black	Metal Black spazzolato / Brushed Metal Black	Bianco Opaco Goffrato / Embossed Matt White
 N1	 N6	 L5	 X	 XP21	 XP31	 XP41
Nero Opaco Goffrato / Embossed Matt Black	Nero opaco / Matt black	Blu mediterraneo / Mediterranean blu	Acciaio inox spazzolato / Brushed stainless steel	Brushed PVD chocolate / Brushed PVD chocolate	Brushed PVD British gold / Brushed PVD British gold	Brushed PVD gold / Brushed PVD gold
 XP81	 XP91					
PVD Brushed Total Black / PVD Brushed Total Black	Brushed PVD copper / Brushed PVD copper					

SHOWER

Z94293

Disegno Complessivo / Overall Drawing



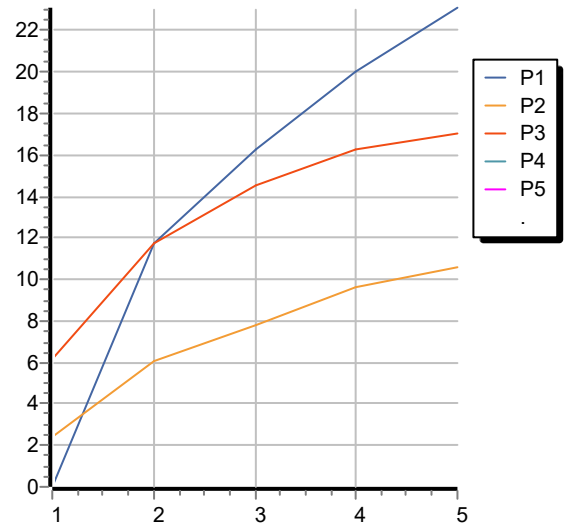
Note / Notes

SHOWER

Z94293

Portate / Flowrates (lt/min)

PRESSIONE PRESSURE	1 BAR	2 BAR	3 BAR	4 BAR	5 BAR
GETTO PIOGGIA <i>P1</i>	6,2	11,7	14,5	16,3	17
GETTO LAMA BLADE FLOW <i>P2</i>		11,7	16,3	20	23,1
GETTO NEBULIZZATO <i>P3</i>	2,4	6,1	7,8	9,6	10,6
<i>P4</i>					
<i>P5</i>					



SHOWER

Z94293

Pesi e Misure / Weights and Sizes

Peso (Kg) Weight (lb)	0,00 (Kg)	0,00 (lb)
Volume test (dc3) - (in3)	0,00 (dc3)	0,00 (in3)
h (mm) - (in)	0,00 (mm)	0,00 (in)
L1 (mm) - (in)	0,00 (mm)	0,00 (in)
L2 (mm) - (in)	0,00 (mm)	0,00 (in)

