

## SHOWER

Z93919.X

Presa acqua. / Wall elbow.



Presa acqua in acciaio inox, da 1/2"x1/2", per gruppo incasso.

Stainless steel wall elbow, 1/2"x1/2".

## SHOWER

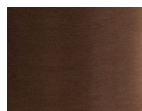
Z93919.X

Finiture / Finishes



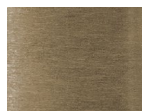
**X**

Acciaio inox spazzolato /  
Brushed stainless steel



**XP21**

Brushed PVD chocolate /  
Brushed PVD chocolate



**XP31**

Brushed PVD British gold /  
Brushed PVD British gold



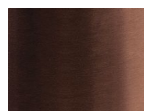
**XP41**

Brushed PVD gold / Brushed  
PVD gold



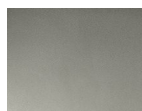
**XP81**

PVD Brushed Total Black /  
PVD Brushed Total Black



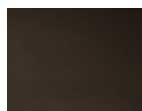
**XP91**

Brushed PVD copper /  
Brushed PVD copper



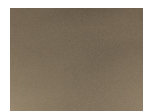
**XS**

Acciaio inox matt / Matt  
stainless steel



**XSP21**

Matt PVD chocolate / Matt  
PVD chocolate



**XSP31**

Matt PVD British gold / Matt  
PVD British gold



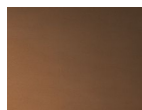
**XSP41**

Matt PVD gold / Matt PVD gold



**XSP81**

Matt PVD total black / Matt  
PVD total black



**XSP91**

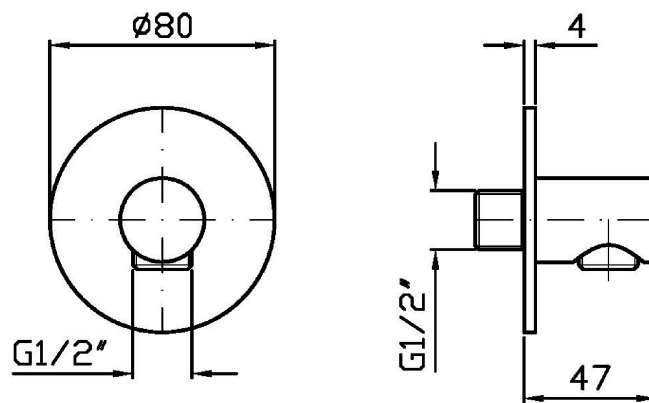
Matt PVD copper / Matt PVD  
copper

Note / Notes

## SHOWER

Z93919.X

Disegno Complessivo / Overall Drawing

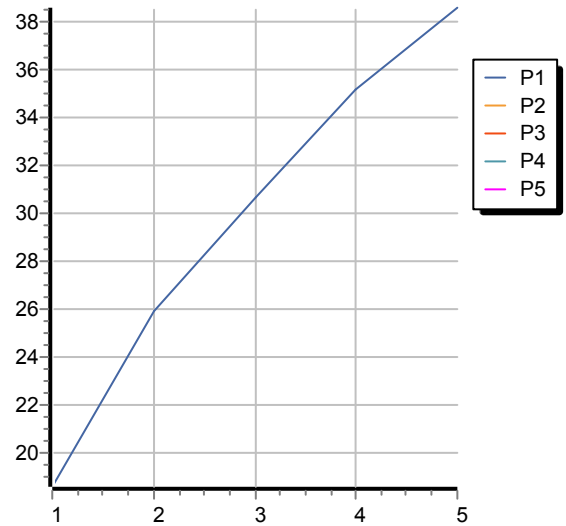


## SHOWER

Z93919.X

Portate / Flowrates (lt/min)

| PRESSIONE<br>PRESSURE                 | 1 BAR | 2 BAR | 3 BAR | 4 BAR | 5 BAR |
|---------------------------------------|-------|-------|-------|-------|-------|
| 1 RUBINETTO APERTO<br>P1 1 TAP OPENED | 18,6  | 25,9  | 30,7  | 35,2  | 38,6  |
| P2                                    |       |       |       |       |       |
| P3                                    |       |       |       |       |       |
| P4                                    |       |       |       |       |       |
| P5                                    |       |       |       |       |       |



## SHOWER

Z93919.X

Pesi e Misure / Weights and Sizes

|                               |               |               |
|-------------------------------|---------------|---------------|
| Peso ( Kg ) Weight ( lb )     | 0,28 ( Kg )   | 0,62 ( lb )   |
| Volume test ( dc3 ) - ( in3 ) | 1,21 ( dc3 )  | 73,84 ( in3 ) |
| h ( mm ) - ( in )             | 73,00 ( mm )  | 2,87 ( in )   |
| L1 ( mm ) - ( in )            | 127,00 ( mm ) | 5,00 ( in )   |
| L2 ( mm ) - ( in )            | 130,00 ( mm ) | 5,12 ( in )   |

