

## SHOWER

Z93730





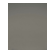
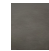




Bocca con getto a cascata. / Blade flow spout.



Bocca di erogazione in acciaio inox, getto a cascata.

Blade flow spout, stainless steel.

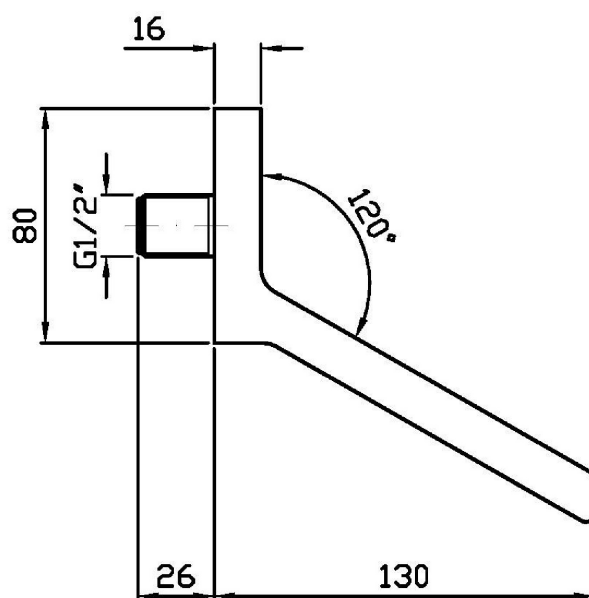
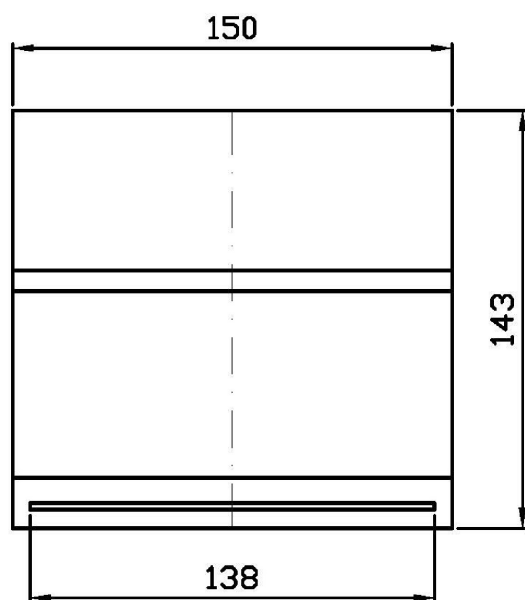
### Finiture / Finishes

 Cromo / Chrome	 C8 Nickel Lucido / Polished Nickel	 C40 Oro / Gold	 C41 Oro spazzolato / Brushed Gold	 C50 Metal Black / Metal Black	 C51 Metal Black spazzolato / Brushed Metal Black	 W1 Bianco Opaco Goffrato / Embossed Matt White	 N1 Nero Opaco Goffrato / Embossed Matt Black
 N6 Nero opaco / Matt black	 X Acciaio inox spazzolato / Brushed stainless steel						

## SHOWER

Z93730

Disegno Complessivo / Overall Drawing

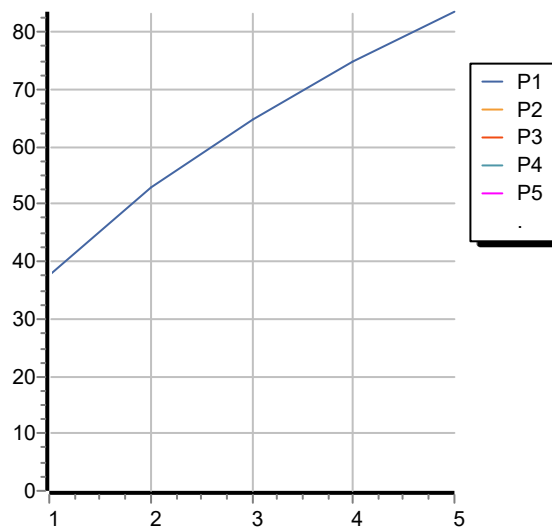


## SHOWER

Z93730

Portate / Flowrates (lt/min)

PRESSIONE PRESSURE	1 BAR	2 BAR	3 BAR	4 BAR	5 BAR
GETTO LAMA BLADE FLOW <i>P1</i>	37,5	53	64,9	74,9	83,6
<i>P2</i>					
<i>P3</i>					
<i>P4</i>					
<i>P5</i>					



## SHOWER

Z93730

Pesi e Misure / Weights and Sizes

Peso ( Kg ) Weight ( lb )	1,05 ( Kg )	2,31 ( lb )
Volume test ( dc3 ) - ( in3 )	4,42 ( dc3 )	269,72 ( in3 )
h ( mm ) - ( in )	120,00 ( mm )	4,72 ( in )
L1 ( mm ) - ( in )	160,00 ( mm )	6,30 ( in )
L2 ( mm ) - ( in )	230,00 ( mm )	9,06 ( in )

