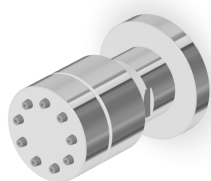


SHOWER

Z92896





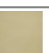


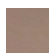









Soffioncino laterale a getto fisso. / Lateral shower head.



Soffioncino laterale a getto fisso, per cabine doccia, con sistema anticalcare

Lateral shower head, simple jet, for shower box, with anti-limescale system.

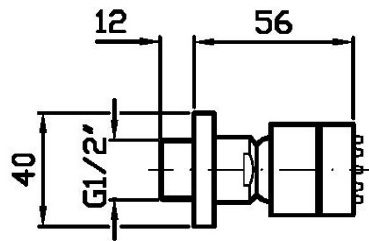
Finiture / Finishes

 C3 Cromo / Chrome	 C8 Nickel Spazzolato / Brushed Nickel	 C40 Nickel Lucido / Polished Nickel	 C41 Oro / Gold	 C50 Oro spazzolato / Brushed Gold	 C51 Metal Black / Metal Black	 C51 Metal Black spazzolato / Brushed Metal Black
 P70 PVD Oro Rosa / PVD Rose Gold	 W1 Bianco Opaco Goffrato / Embossed Matt White	 N1 Nero Opaco Goffrato / Embossed Matt Black	 N6 Nero opaco / Matt black	 L5 Blu mediterraneo / Mediterranean blu	 P21 PVD brushed chocolate / PVD brushed chocolate	 P31 Brushed PVD British gold / Brushed PVD British gold
 P41 PVD Oro Spazzolato / PVD Brushed Gold	 P81 Brushed total black PVD / Brushed total black PVD	 P91 Brushed PVD Copper / Brushed PVD Copper				

SHOWER

Z92896

Disegno Complessivo / Overall Drawing



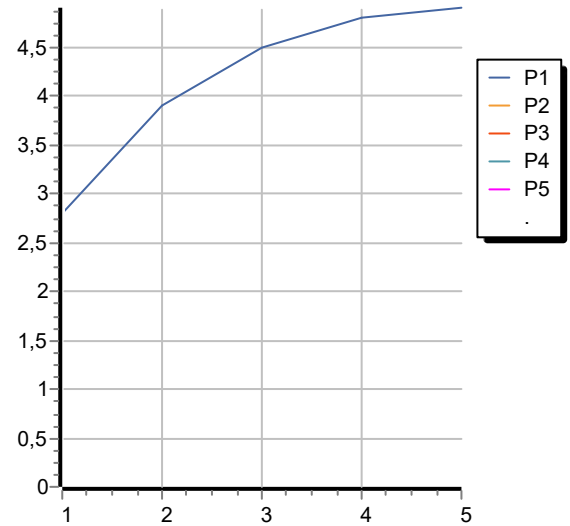
Note / Notes

SHOWER

Z92896

Portate / Flowrates (lt/min)

PRESSIONE PRESSURE	1 BAR	2 BAR	3 BAR	4 BAR	5 BAR
P1 SOFFIONE SHOWER HEAD	2,8	3,9	4,5	4,8	4,9
P2					
P3					
P4					
P5					



SHOWER

Z92896

Pesi e Misure / Weights and Sizes

Peso (Kg) Weight (lb)	0,23 (Kg)	0,51 (lb)
Volume test (dc3) - (in3)	0,34 (dc3)	20,75 (in3)
h (mm) - (in)	50,00 (mm)	1,97 (in)
L1 (mm) - (in)	59,00 (mm)	2,32 (in)
L2 (mm) - (in)	114,00 (mm)	4,49 (in)

