

## MEDAMEDA

Z92240




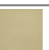



Bocca di erogazione. / Wall spout.



Bocca di erogazione L. 175 mm.

Wall spout L. 175 mm.

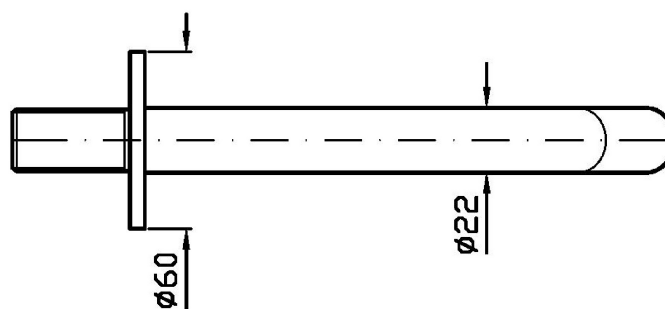
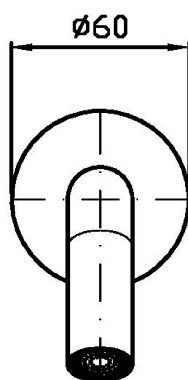
### Finiture / Finishes

 C0	 C3	 C8	 C40	 C41	 C50	 C51
Nero Opaco Goffrato / Embossed Matt Black	 P31	 P81				

## MEDAMEDA

Z92240

Disegno Complessivo / Overall Drawing

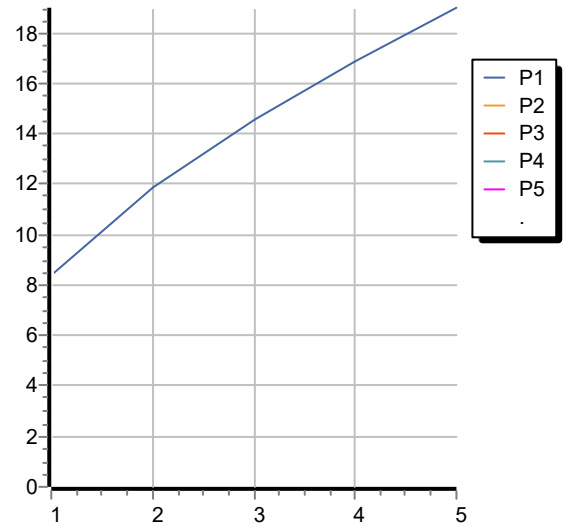


Note / Notes

## MEDAMEDA

Z92240 Portate / Flowrates (lt/min)

PRESSIONE PRESSURE	1 BAR	2 BAR	3 BAR	4 BAR	5 BAR
P1 BOCCA VASCA WALL SPOUT	8,4	11,9	14,6	16,9	19
P2					
P3					
P4					
P5					



## MEDAMEDA

Z92240 Pesì e Misure / Weights and Sizes

Peso ( Kg ) Weight ( lb )	0,65 ( Kg )	1,43 ( lb )
Volume test ( dc3 ) - ( in3 )	1,15 ( dc3 )	70,18 ( in3 )
h ( mm ) - ( in )	45,00 ( mm )	1,77 ( in )
L1 ( mm ) - ( in )	134,00 ( mm )	5,28 ( in )
L2 ( mm ) - ( in )	190,00 ( mm )	7,48 ( in )

