

## INCASSI\_BUILT-IN PARTS

R99511

Parte incasso, senza apertura-chiusura acqua / Built-in part without water flow regulation



Parte incasso, senza apertura-chiusura acqua

Built-in part without water flow regulation

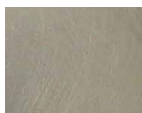
## INCASSI\_BUILT-IN PARTS

R99511

Finiture / Finishes



Croma / Chrome



**C3**

Nickel Spazzolato / Brushed Nickel



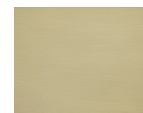
**C8**

Nickel Lucido / Polished Nickel



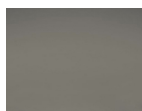
**C40**

Oro / Gold



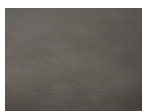
**C41**

Oro spazzolato / Brushed Gold



**C50**

Metal Black / Metal Black



**C51**

Metal Black spazzolato / Brushed Metal Black



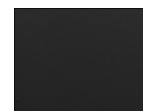
**W1**

Bianco Opaco Goffrato / Embossed Matt White



**N1**

Nero Opaco Goffrato / Embossed Matt Black



**N6**

Nero opaco / Matt black

Note / Notes

## INCASSI\_BUILT-IN PARTS

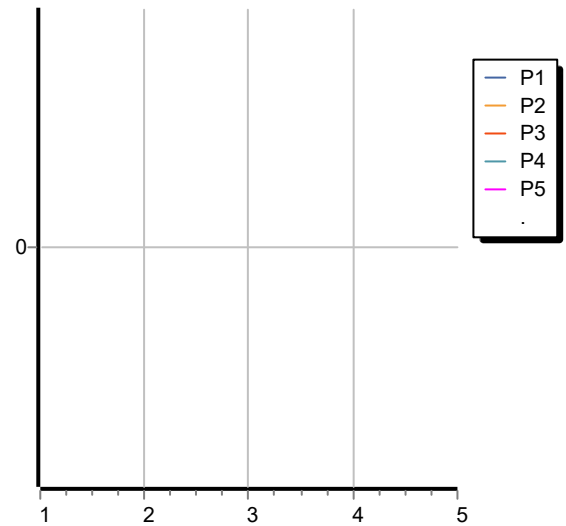
R99511

Disegno Complessivo / Overall Drawing

## INCASSI\_BUILT-IN PARTS

R99511 Portate / Flowrates (lt/min)

PRESSIONE PRESSURE	1 BAR	2 BAR	3 BAR	4 BAR	5 BAR
P1					
P2					
P3					
P4					
P5					



## INCASSI\_BUILT-IN PARTS

R99511 Pesì e Misure / Weights and Sizes

Peso ( Kg ) Weight ( lb )	1,04 ( Kg )	2,29 ( lb )
Volume test ( dc3 ) - ( in3 )	1,37 ( dc3 )	83,60 ( in3 )
h ( mm ) - ( in )	80,00 ( mm )	3,15 ( in )
L1 ( mm ) - ( in )	118,00 ( mm )	4,65 ( in )
L2 ( mm ) - ( in )	145,00 ( mm )	5,71 ( in )

