

HOOP

R96773

Pulsante per soffione laterale. / Lateral shower head on-off button.



Pulsante on-off per soffione laterale, completo di meccanismo.

Lateral shower head on-off button, complete with mechanism.

HOOP

R96773

Finiture / Finishes



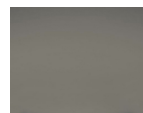
Croma / Chrome



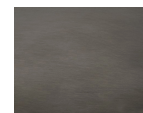
Nickel Spazzolato / Brushed Nickel

C3

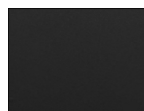
Nickel Lucido / Polished Nickel

C8

Metal Black / Metal Black

C50

Metal Black spazzolato / Brushed Metal Black

C51

Nero opaco / Matt black

N6

PVD brushed chocolate / PVD brushed chocolate

P21

British Gold PVD / British Gold PVD

P30

Brushed PVD British gold / Brushed PVD British gold

P31

PVD Oro Spazzolato / PVD Brushed Gold

P41

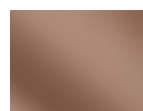
Platino PVD / Platinum PVD

P60

Total black PVD / Total black PVD

P80

Brushed total black PVD / Brushed total black PVD

P81

Copper PVD / Copper PVD

P90

Brushed PVD Copper / Brushed PVD Copper

P91

Glossy gesso / Glossy gesso

J3

Pearl cipria / Pearl cipria

K7

Pearl chili / Pearl chili

R6

Pearl salvia / Pearl salvia

V7

Matt mirto / Matt mirto

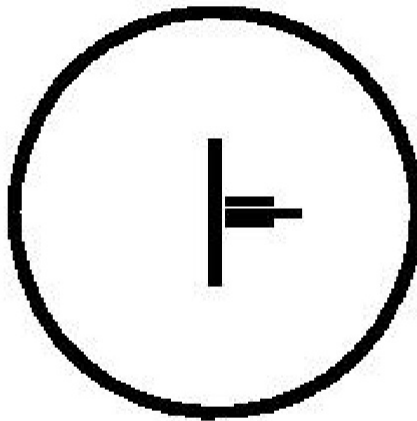
V8

Note / Notes

HOOP

R96773

Disegno Complessivo / Overall Drawing



HOOP

R96773

Pesi e Misure / Weights and Sizes

Peso (Kg) Weight (lb)	0,20 (Kg)	0,44 (lb)
Volume test (dc3) - (in3)	0,34 (dc3)	20,75 (in3)
h (mm) - (in)	50,00 (mm)	1,97 (in)
L1 (mm) - (in)	59,00 (mm)	2,32 (in)
L2 (mm) - (in)	114,00 (mm)	4,49 (in)

